

CERTIFIED CORNER RECORDATION

Corner W 1/4 Sec. 28 T. 33N R. 27W P.M., MT Lincoln County

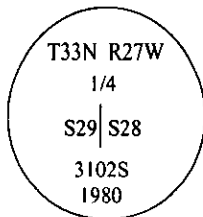
I. 1913 G.L.O. original record by Lewellyn D. Lyman and Royston C. Durnford: Set a slate stone, 18x14x8 ins., 12 ins. in the ground, for 1/4 sec. cor. , mkd. 1/4 on W. face, from which:.

A fir, 6 ins. diam., bears N88°E, 98 lks. dist., mkd "1/4 S28 BT".  
A fir, 18 ins. diam., bears N68 1/2°W, 46 lks. dist., mkd "1/4 S29 BT".

1980 Corner recordation by R. David Schurian: Corner was positioned by using a bearing-distance off of one found BT (original) down but in good condition. The following RM's were set:

An 8 in. tamarack (down) bears N89 1/2°E, 64.6 ft. dist., (old BT)  
A 3 1/4 in. alum. cap bears S32 3/4°W, 25.1 ft. dist..  
A 3 1/4 in. alum. cap bears N69 1/2°W, 27.5 ft. dist..

II. Found a 2 1/2 diam. alum. pipe, 3 in. out of ground, firmly set with a 3 1/4 in. alum. cap mkd. as shown:



from which:

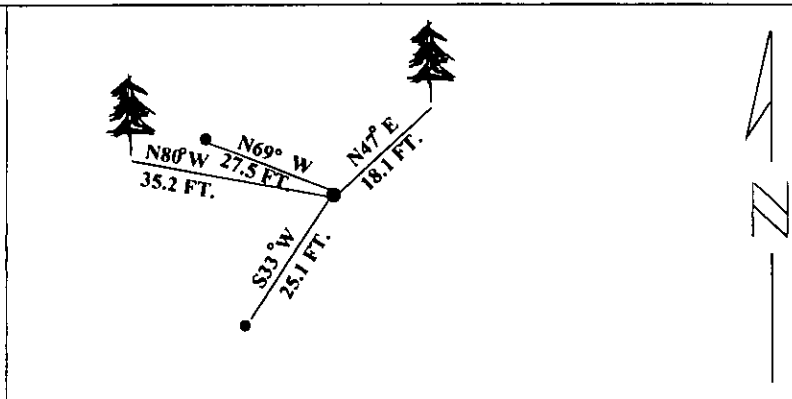
A 3 1/4 in. alum. cap, 4 ins. out of ground, firmly set, bears S33°W, 25.1 ft. dist..  
A 3 1/4 in. alum. cap, 3 ins. out of ground, firmly set, bears N69°W, 27.5 ft. dist..  
RM's and corner cap have carsonite posts set next to them.

III. Established two new bearing trees:

A pine, 7 ins. diam., bears N47°E, 18.1 ft. dist., mkd. 1/4 S28 BT.  
A larch, 7 ins. diam., bears N80°W, 35.2 ft. dist., mkd. 1/4 S29 BT.

Painted red bands around the bearing trees and attached Land Survey Monument and Bearing Tree signs.

Magnetic Declination: 20° East



SKETCH OF CORNER

CERTIFICATION  
I, Mark Federman  
certify the information shown herein is true and correct.  
Mark Federman  
Signature Ground Party Chief  
I, Alvah F. Hughes  
certify that this Corner Record correctly represents work performed by me, or under my direction in compliance with the "Corner Recordation Act", (70-22-101, et seq., M.C.A.)  
Alvah F. Hughes  
Signature of Surveyor  
Date: 12/13/95  
Reg. No.: 7322LS  
Employer: U.S. FOREST SERVICE

Office of Clerk and Recorder, County of LINCOLN. This "corner record" was filed for record on JULY 29, 1997 was noted on the cross-index plat and is assigned page No. 9785 in book No. CORAL M. CUMMINGS By DMB  
County Official

Sec. 28  
Grid showing corner location  
● - corner this sheet