

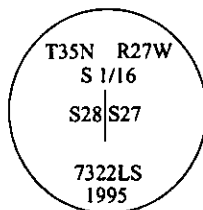
CERTIFIED CORNER RECORDATION

Corner S 1/16 Sec. 28 & 27 T. 35N R. 27W P.M., MT Lincoln County

- I. No previous history.
- II. Found a 1 in. square iron bar.
from which:

A fir, 13 ins. diam., bears S48°W, 10.9 ft. dist., with a healed face.
A pine stump lying loose upon the ground, bears S., 3.0 ft. dist., "S 1/16 BT" visible on face.

- III. At the position of found iron bar, as confirmed by our survey, set a 2 1/2 in. diam., 30 in. long alum. pipe, 25 ins. in the ground, with a 3 1/4 in. alum. cap mkd. as shown. Buried iron bar inside alum. pipe.



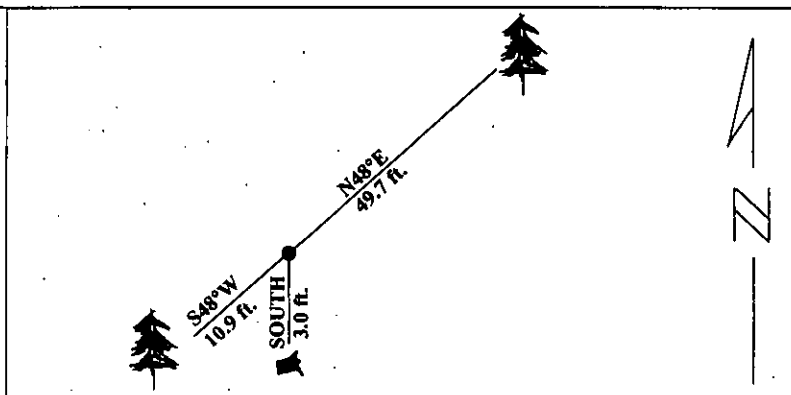
Established one new bearing tree:

A larch, 17 ins. diam., bears N48°E, 49.7 ft. dist., mkd. "S 1/16 S27 BT".

Set a 6 ft. steel guard post with LSM and PB decals, N., 4 feet from monument.

Painted red bands around the bearing trees and attached Land Survey Monument and Bearing Tree signs.

Magnetic Declination: 20° East



SKETCH OF CORNER

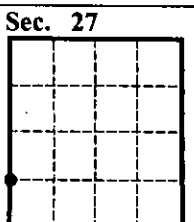
CERTIFICATION	
I, <u>Thomas M. Hommel</u>	
certify the information shown herein is true and correct.	
<u>[Signature]</u>	
Signature Ground Party Chief	
I, <u>Alvah F. Hughes</u>	
certify that this Corner Record correctly represents work performed by me or under my direction in compliance with the "Corner Recordation Act" (70-22-101, et seq., M.C.A.)	
<u>[Signature]</u>	
Signature of Surveyor & Seal	
Date:	<u>1/11/96</u>
Reg. No.:	<u>7322LS</u>
Employer:	<u>U.S. FOREST SERVICE</u>

LINCOLN

Office of Clerk and Recorder, County of _____ This "corner record" was filed for record on JULY 29, 1997 was noted on the cross-index plat and is assigned page No. 9784 in book No. _____

CORAL M. CUMMINGS

County Official



• - corner this sheet