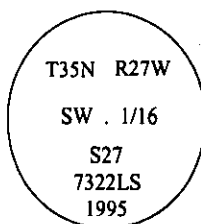


CERTIFIED CORNER RECORDATION

Corner SW 1/16 Sec. 27 T. 35N R. 27W P.M., MT Lincoln County

- I. No previous history.
- II. Nothing found.
- III. At the position determined by survey, set a 3/4 in. diam., 30 in. long alum. rod, 28 ins. in the ground, with a 3 1/4 in. diam. alum. cap mkd. as shown.



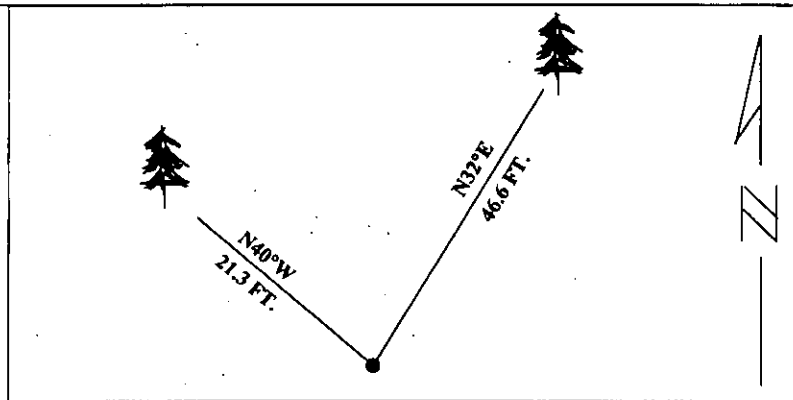
Established two new bearing trees:

- A fir, 20 ins. diam., bears N32°E, 46.6 ft. dist., mkd. "SW 1/16 S27 BT".
- A fir, 5 ins. diam., bears N40°W, 21.3 ft. dist., mkd. "X BT".

Set a 6 ft. steel guard post with LSM and PB decals, S., 4 feet from monument.

Painted red bands around the bearing trees and attached Land Survey Monument and Bearing Tree signs.

Magnetic Declination: 20° East

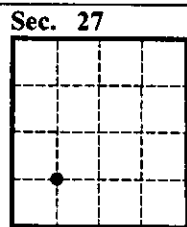


SKETCH OF CORNER

CERTIFICATION	
I, <u>Thomas M. Hommel</u> certify the information shown herein is true and correct.	
<u>Thomas M. Hommel</u> Signature Ground Party Chief	
I, <u>Alyah F. Hughes</u> certify that this Corner Record correctly represents work performed by me or under my direction in compliance with the "Corner Recordation Act" (70-22-101, et seq., M.C.A.)	
<u>Alyah F. Hughes</u> Signature of Surveyor & Seal	
Date:	<u>1/10/96</u>
Reg. No.:	<u>7322LS</u>
Employer: <u>U.S. FOREST SERVICE</u>	

Office of Clerk and Recorder, County of LINCOLN. This "corner record" was filed for record on JULY 29, 1997 was noted on the cross-index plat and is assigned page No. 9782 in book No. CORAL M. CUMMINGS By Sub

County Official



• - corner this sheet

Cross Index No. U-14 T. 35N R. 27W PMM

Adopted July 1, 1981, Montana Board of Professional Engineers & Land Surveyors