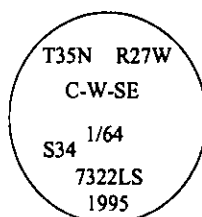


CERTIFIED CORNER RECORDATION

Corner C-W-SE 1/64 Sec. 34 T. 35N R. 27W P.M., MT Lincoln County

- I. No previous history.
- II. Nothing found.
- III. At the position determined by survey, set a 3/4 in. diam., 30 in. long alum. rod, 26 ins. in the ground, with a 3 1/4 in. diam. alum. cap mkd. as shown.



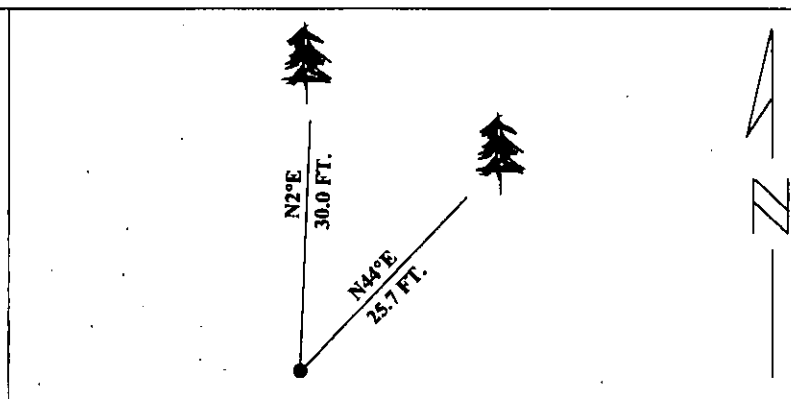
Established two new bearing trees:

A larch, 10 ins. diam., bears N2°E, 30.0 ft. dist., mkd. "C W SE 1/64 S34 BT".
A larch, 10 ins. diam., bears N44°E, 25.7 ft. dist., mkd. "C W SE 1/64 S34 BT".

Set a 6 ft. steel guard post with LSM and PB decals, EAST, 4 feet from monument.

Painted red bands around the bearing trees and attached Land Survey Monument and Bearing Tree signs.

Magnetic Declination: 20° East



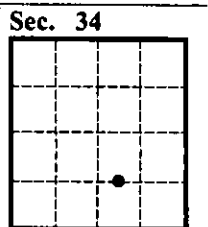
SKETCH OF CORNER

CERTIFICATION	
1. <u>Thomas M. Hommel</u> certify the information shown herein is true and correct.	
<u>[Signature]</u> Signature Ground Party Chief	
2. <u>Alvah F. Hughes</u> certify that this Corner Record correctly represents work performed by me or under my direction in compliance with the "Corner Recordation Act" (70-22-101, et seq., M.C.A.)	
<u>[Signature]</u> Signature of Surveyor & Seal	
Date:	<u>1/10/96</u>
Reg. No.:	<u>7322LS</u>
Employer:	<u>U.S. FOREST SERVICE</u>

Office of Clerk and Recorder, County of LINCOLN. This "corner record" was filed for record on JULY 29, 1997 was noted on the cross-index plat and is assigned page No. 978.0 in book No. _____

CORAL M. CUMMINGS

County Official



● - corner this sheet

Cross Index No. Y-15.5 T. 35N R. 27W PMM

Adopted July 1, 1981, Montana Board of Professional Engineers & Land Surveyors