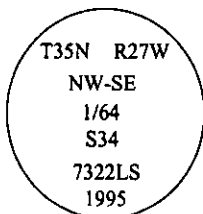


CERTIFIED CORNER RECORDATION

Corner NW-SE 1/64 Sec. 34 T. 35N R. 27W P.M., MT Lincoln County

- I. No previous history.
- II. Nothing found.
- III. At the position determined by survey, set a 3/4 in. diam., 30 in. long alum. rod, 26 ins. in the ground, with a 3 1/4 in. diam. alum. cap mkd. as shown.



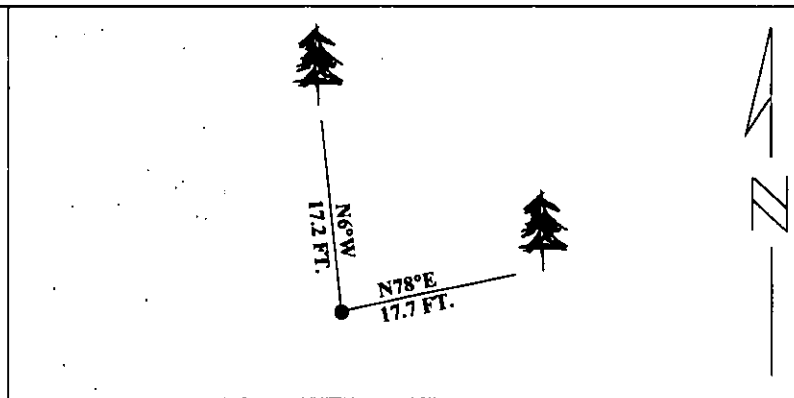
Established two new bearing trees:

A larch, 7 ins. diam., bears N78°E, 17.7 ft. dist., mkd. "NW-SE 1/64 S34 BT".
A pine, 7 ins. diam., bears N6°W, 17.2 ft. dist., mkd. "NW-SE 1/64 S34 BT".

Set a 6 ft. steel guard post with LSM and PB decals, S., 4 feet from monument.

Painted red bands around the bearing trees and attached Land Survey Monument and Bearing Tree signs.

Magnetic Declination: 20° East

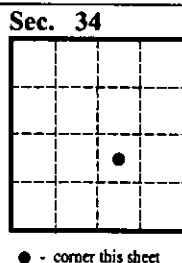


SKETCH OF CORNER

CERTIFICATION	
I. <u>Thomas M. Hommel</u>	certify the information shown herein is true and correct.
<i>Thomas M. Hommel</i>	
Signature Ground Party Chief	
I. <u>Alvah F. Hughes</u>	certify that this Corner Record correctly represents work performed by me or under my direction in compliance with the "Corner Recordation Act" (70-22-101, et seq., M.C.A.)
<i>Alvah F. Hughes</i>	
Signature of Surveyor & Seal	
Date: <u>1/10/96</u>	
Reg. No.: <u>7322LS</u>	
Employer: <u>U.S. FOREST SERVICE</u>	

Office of Clerk and Recorder, County of LINCOLN. This "corner record" was filed for record on JULY 29, 1997 was noted on the cross-index plat and is assigned page No. 9779 in book No. CORAL M. CUMMINGS By CLB

County Official



• - corner this sheet

Cross Index No. X.5-15.5 T. 35N R. 27W PMM