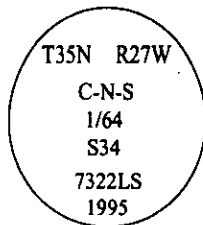


CERTIFIED CORNER RECORDATION

Corner C-N-S 1/64 Sec. 34 T. 35N R. 27W P.M., MT Lincoln County

- I. No previous history.
- II. Nothing found.
- III. At the position determined by survey, set a 3/4 in. diam., 30 in. long alum. rod, 27 ins. in the ground, with a 3 1/4 in. diam. alum. cap mkd. as shown.



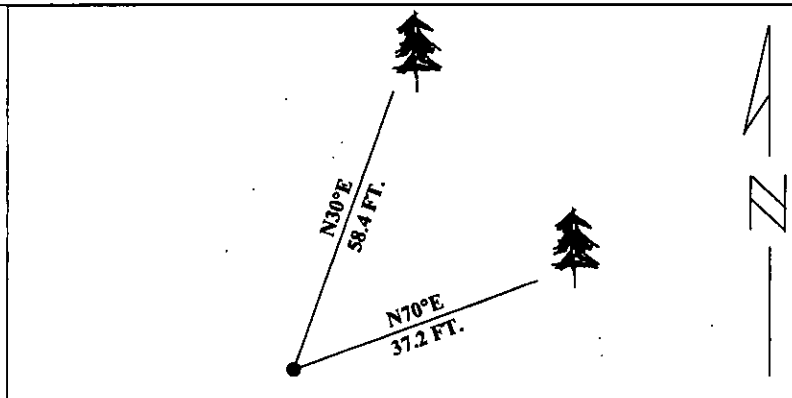
Established two new bearing trees:

- A spruce, 16 ins. diam., bears N30°E, 58.4 ft. dist., mkd. "C N S 1/64 S34 BT".
- A spruce, 9 ins. diam., bears N70°E, 37.2 ft. dist., mkd. "C N S 1/64 S34 BT".

Set a 6 ft. steel guard post with LSM and PB decals, EAST, 4 feet from monument.

Painted red bands around the bearing trees and attached Land Survey Monument and Bearing Tree signs.

Magnetic Declination: 20° East



SKETCH OF CORNER

CERTIFICATION

I, Thomas M. Hommel certify the information shown herein is true and correct.

[Signature]
Signature Ground Party Chief

I, Alvah F. Hughes certify that this Corner Record correctly represents work performed by title or under my direction in compliance with the "Corner Recordation Act" (70-22-101 et seq., M.C.A.)

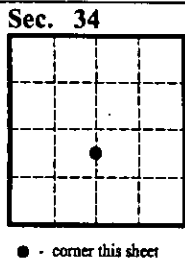
[Signature]
Signature of Surveyor & Seal

Date: 1/8/96

Reg. No.: 7322LS

Employer: U.S. FOREST SERVICE

Office of Clerk and Recorder, County of LINCOLN. This "corner record" was filed for record on JULY 29, 1997 was noted on the cross-index plat and is assigned page No. 9778 in book No. : CORAL M. CUMMINGS By RLB
County Official



● - corner this sheet