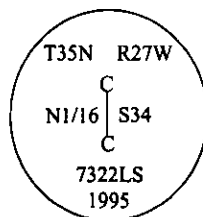


CERTIFIED CORNER RECORDATION

Corner CN 1/16 Sec. 34 T. 35N R. 27W P.M., MT Lincoln County

- I. No previous history.
- II. Nothing found.
- III. At the position determined by survey, set a 3/4 in. diam., 30 in. long alum. rod, 28 ins. in the ground, with a 3 1/4 in. diam. alum. cap mkd. as shown.



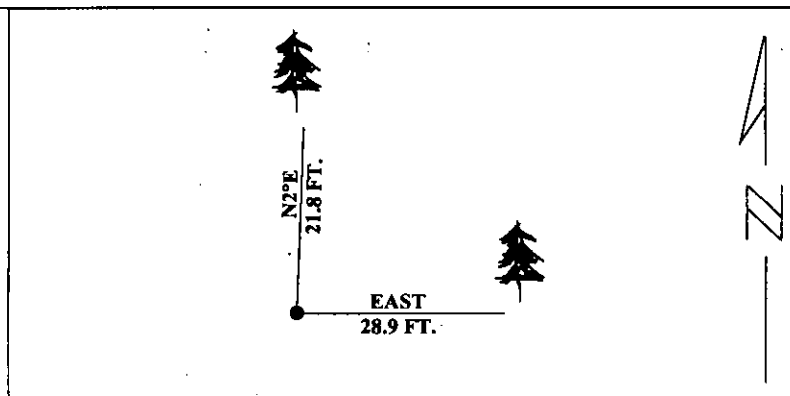
Established two new bearing trees:

- A larch, 4 ins. diam., bears N2°E, 21.8 ft. dist., mkd. "X BT".
- A fir, 27 ins. diam., bears EAST, 28.9 ft. dist., mkd. "CN 1/16 S34 BT".

Set a 6 ft. steel guard post with LSM and PB decals, S., 4 feet from monument.

Painted red bands around the bearing trees and attached Land Survey Monument and Bearing Tree signs.

Magnetic Declination: 20° East



SKETCH OF CORNER

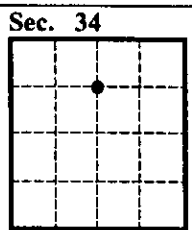
CERTIFICATION	
I. <u>Thomas M. Hommel</u>	certify the information shown herein is true and correct.
	Signature Ground Party Chief
I. <u>Alvah F. Hughes</u>	certify that this Corner Record correctly represents work performed by me, or under my direction in compliance with the "Corner Recordation Act", (70-22-101, et seq., M.C.A.)
	Signature of Surveyor & Seal
Date: <u>1/8/96</u>	
Reg. No.: <u>7322LS</u>	
Employer: <u>U.S. FOREST SERVICE</u>	

LINCOLN

Office of Clerk and Recorder, County of _____ This "corner record" was filed for record on JULY 29, 1997 was noted on the cross-index plat and is assigned page No. 9776 in book No. _____

CORAL M. CUMMINGS

County Official



• - corner this sheet

Cross Index No. W-15 T. 35N R. 27W PMM

Adopted July 1, 1981, Montana Board of Professional Engineers & Land Surveyors