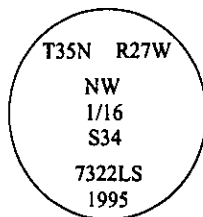


CERTIFIED CORNER RECORDATION

Corner NW 1/16 Sec. 34 T. 35N R. 27W P.M., MT Lincoln County

- I. No previous history.
- II. Nothing found.
- III. At the position determined by survey, set a 3/4 in. diam., 30 in. long alum. rod, 4 ins. below grade, with a 3 1/4 in. diam. alum. cap mkd. as shown.



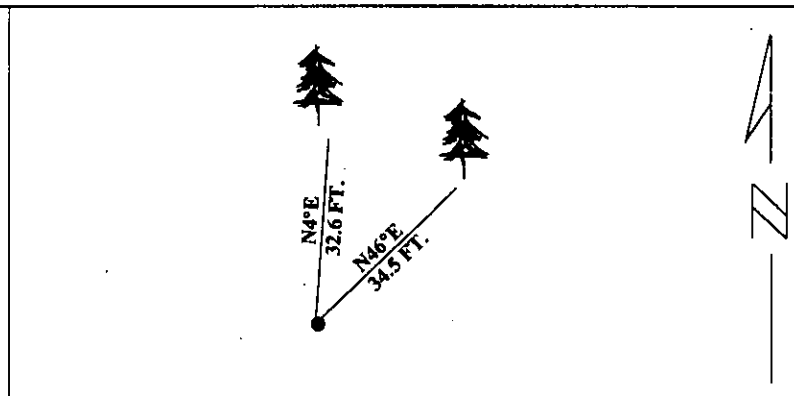
Established two new bearing trees:

- A spruce, 11 ins. diam., bears N4°E, 32.6 ft. dist., mkd. "NW 1/16 S34 BT".
- A spruce, 8 ins. diam., bears N46°E, 34.5 ft. dist., mkd. "X BT".

Set a 6 ft. steel guard post with LSM and PB decals, N., 5 feet from monument.

Painted red bands around the bearing trees and attached Land Survey Monument and Bearing Tree signs.

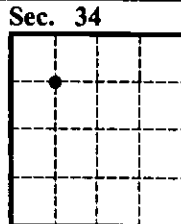
Magnetic Declination: 20° East



SKETCH OF CORNER

CERTIFICATION	
I. <u>Thomas M. Hommel</u>	certify the information shown herein is true and correct.
Signature Ground Party Chief	
I. <u>Alvah F. Hughes</u>	certify that this Corner Record correctly represents work performed by me or under my direction in compliance with the "Corner Recordation Act" (70-22-101 et seq., M.C.A.)
Signature of Surveyor & Seal	
Date:	<u>1/8/96</u>
Reg. No.:	<u>7322LS</u>
Employer:	<u>U.S. FOREST SERVICE</u>

Office of Clerk and Recorder, County of LINCOLN. This "corner record" was filed for record on JULY 29, 1997 was noted on the cross-index plat and is assigned page No. 9775 in book No. CORAL M. CUMMINGS By DUB County Official



● - corner this sheet