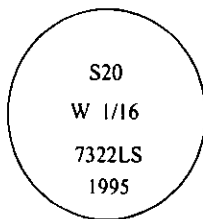


CERTIFIED CORNER RECORDATION

Corner W 1/16 Sec. 20 T. 35N R. 27W P.M., MT Lincoln County

- I. No previous history.
- II. Nothing found.
- III. At the position determined by survey, set a 3/4 in. diam., 30 ins. long alum. rod, 15 ins. in the ground, with a 3 1/4 in. diam. alum. cap mkd. as shown:



Established two new bearing trees:

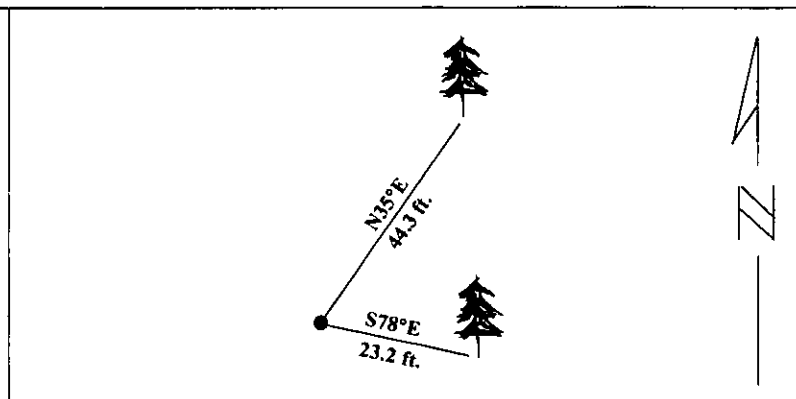
A fir, 8 ins. diam., bears N35°E, 44.3 ft. dist., mkd. "W 1/16 S20 BT".

A fir, 15 ins. diam., bears S78°E, 23.2 ft. dist., mkd. "W 1/16 S20 BT".

Set two 6 ft. steel guard posts with LSM and PB decals: North, 2.0 feet dist., and West, 2.6 feet dist. from monument.

Painted red bands around the bearing trees and attached Land Survey Monument and Bearing Tree signs.

Magnetic Declination: 20° East



SKETCH OF CORNER

CERTIFICATION

I. Rex Owen Rice
certify the information shown herein is true and correct.

Signature Ground Party Chief

I. Alvah F. Hughes
certify that this Corner Record correctly represents work performed by me or under my direction in compliance with the "Corner Recordation Act" (70-22-101, et seq., M.C.A.)

Alvah F. Hughes
Signature of Surveyor Seal

Date: 3/28/96

Reg. No.: 7322LS

Employer: U.S. FOREST SERVICE

LINCOLN

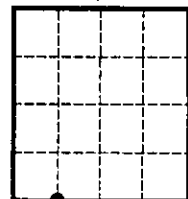
Office of Clerk and Recorder, County of _____ This "corner record" was filed for record on JULY 29, 1997 was noted on the cross-index plat and is assigned page No. 9748

in book No. _____

CORAL M. CUMMINGS
County Official

By DEB

Sec. 20



• - corner this sheet

Cross Index No. R-06 T. 35N R. 27W PMM