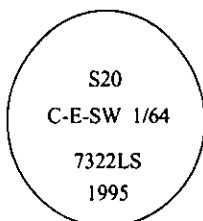


CERTIFIED CORNER RECORDATION

Corner C-E-SW 1/64 Sec. 20 T. 35N R. 27W P.M., MT Lincoln County

- I. No previous history.
- II. Nothing found.
- III. At the position determined by survey, set a 3/4 in. diam., 30 ins. long alum. rod, 20 ins. in the ground, with a 3 1/4 in. diam. alum. cap mkd. as shown:



Established two new bearing trees:

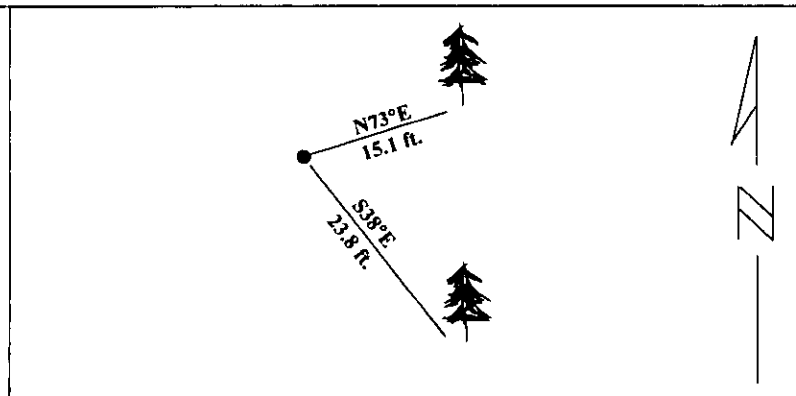
A spruce, 12 ins. diam., bears N73°E, 15.1 ft. dist., mkd. "C-E-SW 1/64 S20 BT".

A fir, 11 ins. diam., bears S38°E, 23.8 ft. dist., mkd. "C-E-SW 1/64 S20 BT".

Set two 6 ft. steel guard posts with LSM and PB decals: North, 4.0 feet dist., and West, 3.5 feet dist. from monument.

Painted red bands around the bearing trees and attached Land Survey Monument and Bearing Tree signs.

Magnetic Declination: 20° East



SKETCH OF CORNER

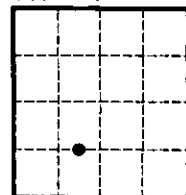
CERTIFICATION	
I. <u>Rex Owen Rice</u>	certify the information shown herein is true and correct.
Signature Ground Party Chief	
I. <u>Alvah F. Hughes</u>	certify that this Corner Record correctly represents work performed by me or under my direction in compliance with the "Corner Recordation Act" (70-22-101, et seq., M.C.A.)
Signature of Surveyor Seal	
Date: <u>3/28/96</u>	
Reg. No.: <u>7322LS</u>	
Employer: <u>U.S. FOREST SERVICE</u>	

Office of Clerk and Recorder, County of LINCOLN. This "corner record" was filed for record on JULY 29, 1997 was noted on the cross-index plat and is assigned page No. 9745 in book No. CORAL M. CUMMINGS

County Official

By OUB

Sec. 20



• - corner this sheet