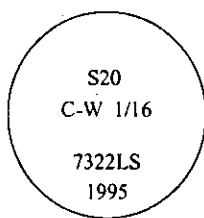


# CERTIFIED CORNER RECORDATION

Corner CW 1/16 Sec. 20 T. 35N R. 27W P.M., MT Lincoln County

- I. No previous history.
- II. Nothing found.
- III. At the position determined by survey, set a 3/4 in. diam., 30 ins. long alum. rod, 27 ins. in the ground, with a 3 1/4 in. diam. alum. cap mkd. as shown:



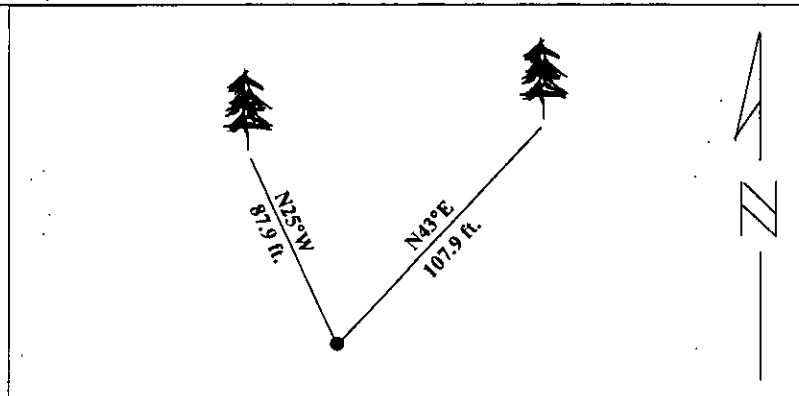
Established two new bearing trees:

- A pine, 14 ins. diam., bears N43°E, 107.9 ft. dist., mkd. "C-W 1/16 S20 BT".
- A fir, 13 ins. diam., bears N25°W, 87.9 ft. dist., mkd. "C-W 1/16 S20 BT".

Set a 6 ft. steel guard post with LSM and PB decals, East, 7.4 feet from monument.

Painted red bands around the bearing trees and attached Land Survey Monument and Bearing Tree signs.

Magnetic Declination: 20° East



SKETCH OF CORNER

**CERTIFICATION**

I, Rex Owen Rice  
certify the information shown herein is true and correct.

Signature Ground Party Chief

I, Alvah F. Hughes  
certify that this Corner Record correctly represents work performed by me or under my direction in compliance with the "Corner Recordation Act" (70-22-101, et seq., M.C.A.).

Signature of Surveyor & Seal

Date: 3/28/96

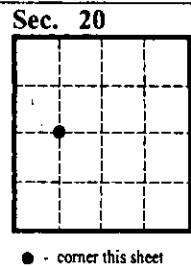
Reg. No.: 7322LS

Employer: U.S. FOREST SERVICE

Office of Clerk and Recorder, County of LINCOLN. This "corner record" was filed for record on JULY 29, 1997, was noted on the cross-index plat and is assigned page No. 9744 in book No. \_\_\_\_\_

**CORAL M. CUMMINGS**

County Official By OEB



• - corner this sheet