

CERTIFIED LAND CORNER RECORDATION  
(REFERENCE FSM 7153.53)

DESCRIPTION OF CORNER EVIDENCE FOUND, AND ORIGINAL RECORD (IF KNOWN)

At the 1/4 corner common to Sections 18, T35N, R27W, Lincoln County, Montana,

FOUND: Original tree to be cut, but stump in good coondition, with a 5/8" rebar drove, in the top. New RM's had been set by the BLM.

DESCRIPTION OF MONUMENT AND ACCESSORIES ESTABLISHED  
TO PERPETUATE THE ORIGINAL LOCATION OF THIS CORNER:

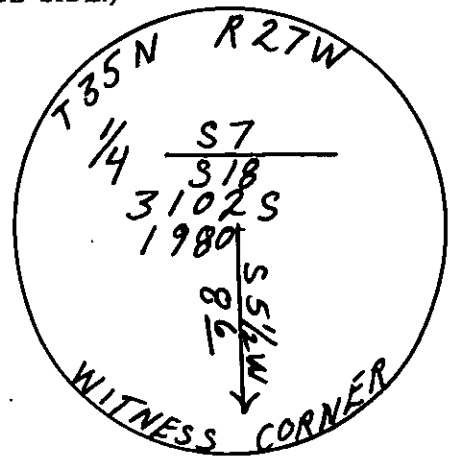
Date of work: July 15, 80

At the corner a witness corner was set.  
A 3/4" aluminum cap on a 2 1/2" x 30" pipe, 26" in the ground.  
Witness corner bears N. 5 1/2°E., at 8.6 feet from original  
corner. Used two bearing trees for the original corner to  
reference the witness corner.

A 16" fir bears S.3°W., 35.8 feet  
A 12" fir bears S. 83 1/2°E., 45.4 feet

SKETCH, WITH COURSE AND DISTANCE TO ADJACENT CORNERS IF DETERMINED IN THIS SURVEY.  
(MAY SKETCH OR PASTE REPRODUCTION ON REVERSE SIDE.)

See Certificate of Survey No. \_\_\_\_\_



Surveyor's Seal



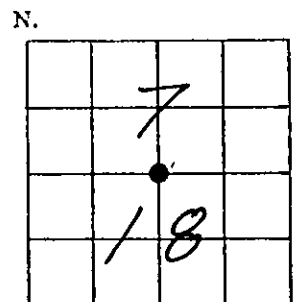
I, Paul S. Long, Jr.  
certify that the information shown herein is true and correct.

Paul S. Long Jr.  
Signature of Ground Party Chief

I, R. David Schurian  
certify that I have carefully performed or reviewed the  
work done on the diagrammed corner as reported on this  
recordation form and approve the same.

R. David Schurian  
Signature of Surveyor

DIAGRAM OF CORNER:



= Corner recorded on the sheet

3102S  
Registration Number

Correction Form

Office of Clerk and Recorder, County of Lincoln

This "corner record" was filed for record on the 7th day of August 1980, was noted on the cross-index plat and is

assigned page No. 870A, in book No. \_\_\_\_\_

Eleanor L. Vaughan by Betty Dyer  
County Official Deputy

Cross Index No. J-3 T. 35N R. 27W Mer.