

CERTIFIED LAND CORNER RECORDATION  
(REFERENCE FSM 7153.53)

DESCRIPTION OF CORNER EVIDENCE FOUND, AND ORIGINAL RECORD (IF KNOWN)

At the S 1/16 corner of Sections 30|29, T35N, R27W, Lincoln County, Montana:

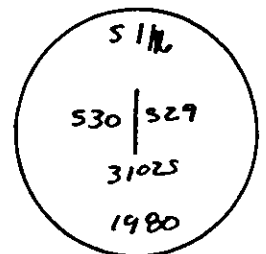
NO ORIGINAL EVIDENCE

DESCRIPTION OF MONUMENT AND ACCESSORIES ESTABLISHED  
TO PERPETUATE THE ORIGINAL LOCATION OF THIS CORNER:

Date of work: April, 1980

At the corner a 3-1/4" alum. cap on a 2"x30" pipe was set  
in the ground. The following RM's were set:

A 10" lodgepole pine bears 66°E., 26.5 feet  
A 12" larch bears N.39°W., 64.4 feet

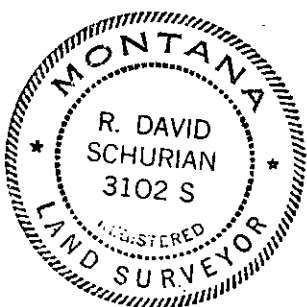


Variance: 19-3/4°

SKETCH, WITH COURSE AND DISTANCE TO ADJACENT CORNERS IF DETERMINED IN THIS SURVEY.  
(MAY SKETCH OR PASTE REPRODUCTION ON REVERSE SIDE.)

See Certificate of Survey Number \_\_\_\_\_

Surveyor's Seal



I, Paul S. Long, Jr.  
certify that the information shown herein is true and correct.

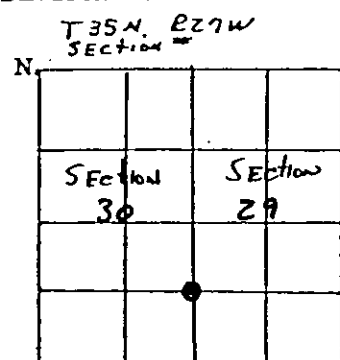
Paul S. Long, Jr.  
Signature of Ground Party Chief

I, R. David Schurian  
certify that I have carefully performed or reviewed the work done on the diagrammed corner as reported on this recordation form and approve the same.

R. David Schurian  
Signature of Surveyor

3102S  
Registration Number

DIAGRAM OF CORNER:



Office of Clerk and Recorder, County of Lincoln

This "corner record" was filed for record on the 24<sup>th</sup> day of June, 1980, was noted on the cross-index plat and is assigned page No. 804, in book No. \_\_\_\_\_

Elanor L. Vaughn Sharon M. Warkhoff  
County Official Deputy

Cross Index No. V-5 T. 35N R. 27W Mer