

CERTIFIED LAND CORNER RECORDATION
(REFERENCE FSM 7153.53)

DESCRIPTION OF CORNER EVIDENCE FOUND, AND ORIGINAL RECORD (IF KNOWN)

At the S 1/16 corner of Sections 24 and 19, T35N, R27W, Lincoln County, Montana:
R28W

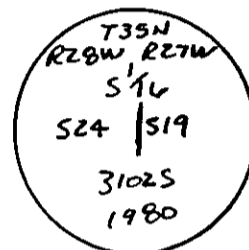
NO ORIGINAL EVIDENCE

DESCRIPTION OF MONUMENT AND ACCESSORIES ESTABLISHED
TO PERPETUATE THE ORIGINAL LOCATION OF THIS CORNER:

Date of work: April, 1980.

At the corner we set a 3-1/4" alum. cap on a 2"x30" pipe, 25"
in the ground with a small mound of stone. The following RM's
were set:

A 10" larch bears S.76°E., 26.9 feet
An 18" fir bears N.37°W., 37.7 feet



Variance: 19-3/4°

SKETCH, WITH COURSE AND DISTANCE TO ADJACENT CORNERS IF DETERMINED IN THIS SURVEY.
(MAY SKETCH OR PASTE REPRODUCTION ON REVERSE SIDE.)

See Certificate of Survey Number _____

Surveyor's Seal



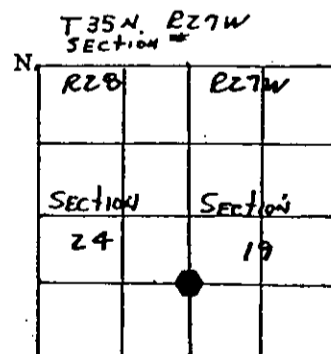
I, Paul S. Long, Jr.
certify that the information shown herein is true and
correct.

Paul S. Long, Jr.
Signature of Ground Party Chief

I, R. David Schurian
certify that I have carefully performed or reviewed the
work done on the diagrammed corner as reported on this
recording form and approve the same.

R. David Schurian
Signature of Surveyor

DIAGRAM OF CORNER:



3102S
Registration Number

Office of Clerk and Recorder, County of Lincoln

This "corner record" was filed for record on the 24th day of June 19 80, was noted on the cross-index plat and is
assigned page No. 802, in book No. _____

Eleanor L. Vaughn County Official
Sharon M. W... Deputy
Cross Index No. Q-1 T. 35N R. 27W Mer
Q-25 35N 28W