

CERTIFIED LAND CORNER RECORDATION
(REFERENCE FSM 7153.53)

DESCRIPTION OF CORNER EVIDENCE FOUND, AND ORIGINAL RECORD (IF KNOWN)

At the SW 1/16 corner of Section 18, T35N, R27W, Lincoln County, Montana:

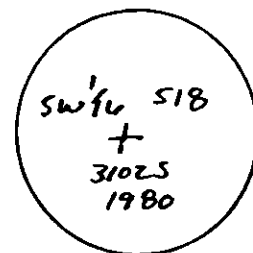
NO ORIGINAL EVIDENCE

DESCRIPTION OF MONUMENT AND ACCESSORIES ESTABLISHED
TO PERPETUATE THE ORIGINAL LOCATION OF THIS CORNER:

Date of work: April, 1980

At the corner set a 3-1/4" alum. cap on a 2"x30" pipe,
26" in the ground, w/small mound of stone. The following
RM's were set:

- A 12" fir bears N.88°E., 25.4 feet
- A 12" fir bears N.53°W., 21.7 feet



Variance: 19-3/4°

SKETCH, WITH COURSE AND DISTANCE TO ADJACENT CORNERS IF DETERMINED IN THIS SURVEY.
(MAY SKETCH OR PASTE REPRODUCTION ON REVERSE SIDE.)

See Certificate of Survey Number _____

Surveyor's Seal



I, Paul S. Long, Jr.
certify that the information shown herein is true and
correct.

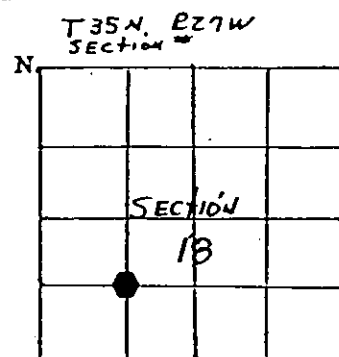
Paul S. Long, Jr.
Signature of Ground Party Chief

I, R. David Schurian
certify that I have carefully performed or reviewed the
work done on the diagrammed corner as reported on this
recording form and approve the same.

R. David Schurian
Signature of Surveyor

3102S
Registration Number

DIAGRAM OF CORNER:



Office of Clerk and Recorder, County of Lincoln

This "corner record" was filed for record on the 24th day of June 1980, was noted on the cross-index plat and is
assigned page No. 800, in book No. _____

Eleanor Laughlin
County Official

Cross Index No. M-4 T 35N R 27W Mer