

CERTIFIED LAND CORNER RECORDATION
(REFERENCE FSM 7153-53)

DESCRIPTION OF CORNER EVIDENCE FOUND, AND ORIGINAL RECORD (IF KNOWN)

At the W 1/16 corner of S18 T35N, R27W, Lincoln County, Montana:
S19

NO ORIGINAL EVIDENCE

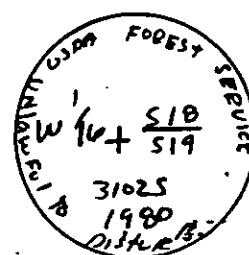
DESCRIPTION OF MONUMENT AND ACCESSORIES ESTABLISHED
TO PERPETUATE THE ORIGINAL LOCATION OF THIS CORNER:

Date of work: April, 1980

At the corner a 3-1/4" alum. cap on a 2"x30" pipe, 26" in the
ground, with a mound of stone. The following RM's were
set:

A 10" fir bears S.58°E., 25.4 feet
A 12" fir bears S.45°W., 14.9 feet

a:

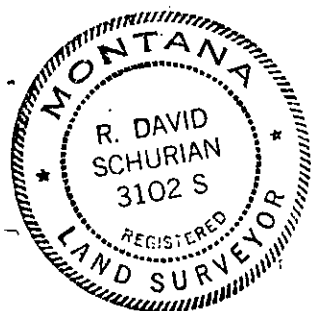


Variance: 19-3/4°

SKETCH, WITH COURSE AND DISTANCE TO ADJACENT CORNERS IF DETERMINED IN THIS SURVEY.
(MAY SKETCH OR PASTE REPRODUCTION ON REVERSE SIDE.)

See Certificate of Survey Number _____

Surveyor's Seal



I, Paul S. Long, Jr.
certify that the information shown herein is true and
correct.

Paul S. Long, Jr.

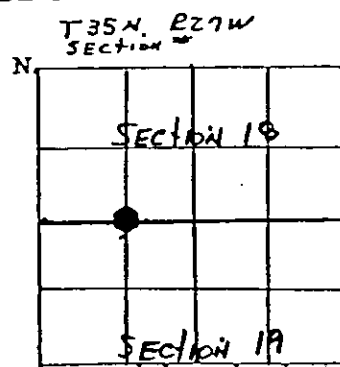
Signature of Ground Party Chief

I, R. David Schurian
certify that I have carefully performed or reviewed the
work done on the diagrammed corner as reported on this
recordation form and approve the same.

R. David Schurian

Signature of Surveyor

DIAGRAM OF CORNER:



31025

Registration Number

Office of Clerk and Recorder, County of Lincoln

This "corner record" was filed for record on the 24th day of June, 1980, was noted on the cross-index plat and is

assigned page No. 798, in book No. _____

Eleanor P. Vaughn
County Official

Cross Index No. N-2 T. 35N R. 27W Mer.