

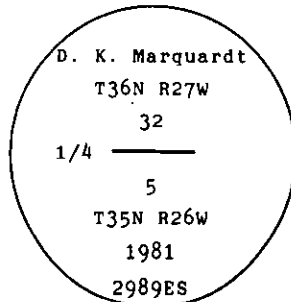
INSTRUCTIONS

1. Original and/or subsequent record used to evaluate the corner position.
2. Description of evidence found, note discrepancies in the record, state method of establishing lost or obliterated corners.
3. Description of monument and accessories set to perpetuate the corner position.
4. Sketch of corner, show all pertinent data which can best be shown in a sketch example, corner marking, topography lies, position of accessories, etc.
5. Certification must be signed and sealed by Land Surveyor registered in the State of Montana.
6. Fill in Cross Index & Section Diagram at bottom of sheet.

CERTIFIED CORNER RECORDATION

Corner N 1/4 S 5 only T. 35 N. R. 27 W. P.M.M. Lincoln County

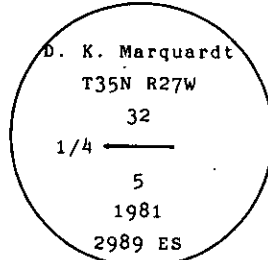
- I. 1893 GLO original record by A. L. Jaqueth et al: Set a post, 3 ft. long, 3 ins. square, 24 ins. in the ground, and two bearing trees.
- 1903 Retracement of the Fractional N. bdry. by A. L. Rinearson et al: Set a porphyry stone, 20x16x8, 15 ins. in the ground for 1/4 sec. cor. marked on N. face, from which:
- A fir, 6 ins. diam, bears N 16 1/4° E, 24 lks. dist., mkd. 1/4 S 32 BT.
- A fir, 8 ins. diam., bears S 72° E, 10 lks. dist., mkd. 1/4 S 5 BT.
- The old 1/4 sec. cor. which is a post marked and witnessed as described by the surveyor general, I destroy.
- 1913 Retracement and Resurvey of the Fractional N. Bdry. by L. D. Lyman et al: The fractional resurvey of the N. lines of secs. 6, 3, 2 and 1. The N. 1/4 sec. cor. for S 5 was never reestablished.
- 1981 Certified Corner Recordation by D. K. Marquardt: Set aluminum cap by proportion in a collar of stone. The cap is marked as shown below. See also Certificate of Survey # 989 filed at the Lincoln County Courthouse.



from which:

- A fir, 7 ins. diam., 25.73 ft. dist.
- A fir, 12 ins. diam., 5.38 ft. dist.

- III. Found a 2 1/2 in. diam. aluminum pipe, 17 ins. out of the ground, firmly set, with a 3 1/4 in. daim. aluminum cap mkd. as shown:



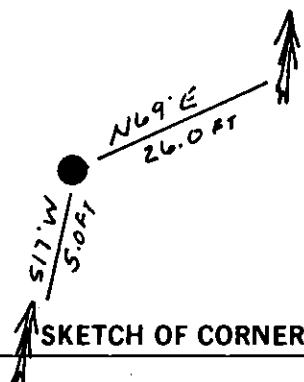
from which:

- A fir, 10 ins. diam., bears N 69° E, 26.0 ft., mkd. with a healed face.
- A fir, 14 ins. diam., bears S 17° W, 5.0 ft. dist., mkd. with a healed face.

NOTE: The cap on this monument is marked incorrectly as this 1/4 sec. corner refers to sec. 5 only. Painted a red band around each bearing tree and attached Land Survey Monument and Bearing Tree signs.

No guard post established.

Magnetic Declination: East, 20°



CERTIFICATION

Thomas M. Hommel

I, Thomas M. Hommel certify the information shown herein is true and correct.

Thomas M. Hommel
Signature of Found Party Chief

Alvah F. Hughes

I, Alvah F. Hughes certify that this Corner Record correctly represents work performed by me or under my direction in compliance with the "Corner Recordation Act" (70-22-101, et seq., M.C.A.)

Alvah F. Hughes
Signature of Surveyor & Seal

Date: 12/30/93 Reg. No. 7322

Employer: U.S. FOREST SERVICE

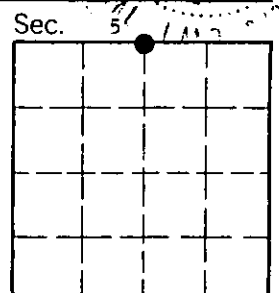
Office of Clerk and Recorder, County of Lincoln. This "corner record" was filed for record on Jan 12, 1994 was noted on the cross-index plat and is assigned page No. 6094, in book No. Coral M. Cumming

County Official

A-07

35 N 27 W

Cross Index No. _____ T. _____ R. _____ P.M.M.



• - corner this sheet