

## INSTRUCTIONS

1. Original and/or subsequent record used to evaluate the corner position.
2. Description of evidence found, note discrepancies in the record, state method of establishing lost or obliterated corners.
3. Description of monument and accessories set to perpetuate the corner position.
4. Sketch of corner, show all pertinent data which can best be shown in a sketch example, corner marking, topography ties, position of accessories, etc.
5. Certification must be signed and sealed by Land Surveyor registered in the State of Montana.
6. Fill in Cross Index & Section Diagram at bottom of sheet.

## CERTIFIED CORNER RECORDATION

Corner 8 of HES 573 T. 35 N. R. 27 W. P.M.M. Lincoln County

I. 1919 HES 573 record by W. P. Stephenson: "Establish Cor. No. 8 of this survey as follows:

Set a small stone marked with a cross(x), under a limestone, 30x16x6 ins., 20 ins. in the ground, mkd. 8 HES 573 on the SE face, and a cross(x) on top for the exact corner point, from which

A cross(X) on a pine, 16 ins. diam., bears S45°03'E, 72 lks.(47.52 ft.) dist.  
A cross(X) on a fir, 16 ins. diam., bears S14°06'W, 61 lks.(40.26 ft.) dist.  
Each blaze and scribed 8 HES 573 BT.

Raise a mound of stone 4 ft. base, 2 ft. high, South of the corner."

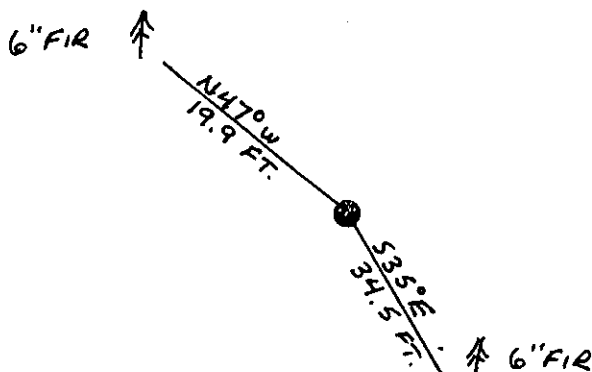
II. Found a firmly set 30x16x6 ins. stone, 9 ins. above the ground, mkd. 8 HES 573 on SE face.

From which:

A pine stump, 22 ins. diam., bears S45°E, 47.5 ft. dist., mkd. 8 HES 573 BT.(Original BT)  
A fir, 6 ins. diam., bears S35°E, 34.5 ft. dist., mkd. RM.(No record)  
A root crown with down fir, bears S14°W, 39.6 ft. dist., visible scribing.(Original BT)  
A fir, 6 ins. diam., bears N47°W, 19.9 ft. dist., mkd. RM.(No record)

III. Painted red bands around the bearing trees and attached "Land Survey Monument" and "Bearing Tree" signs.

Set a galvanized steel guard post with "Land Survey Monument" and "Property Boundary" decals, S45°E, 3 ft.  
Magnetic declination: 20° East



SKETCH OF CORNER

CERTIFICATION  
Kenneth Kern

I. \_\_\_\_\_  
certify the information shown herein is true and correct.

*Alvah F. Hughes*  
Signature Ground Party Chief  
Alvah F. Hughes

I. \_\_\_\_\_  
certify that this Corner Record correctly represents work performed by me or under my direction in compliance with the "Corner Recordation Act" (70-22-101, et seq., M.C.A.)

*Alvah F. Hughes*  
1/12/92 Signature of Surveyor & Seal  
7322 L.S.

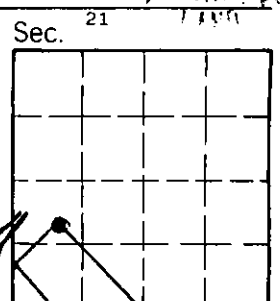
Date: \_\_\_\_\_ Reg. No. \_\_\_\_\_  
U.S. FOREST SERVICE

Employer: \_\_\_\_\_

Office of Clerk and Recorder, County of Lincoln. This "corner record" was filed for record on Jan 28, 1992 was noted on the cross-index plat and is assigned page No. 4682, in book No. \_\_\_\_\_

*Coral M. Cummings by Bill Bullock*  
County Official  
8 HES 573 35 N 27 W

Cross Index No. \_\_\_\_\_ T. \_\_\_\_\_ R. \_\_\_\_\_ PMM



• - corner this sheet