

INSTRUCTIONS

1. Original and/or subsequent record used to evaluate the corner position.
2. Description of evidence found, note discrepancies in the record, state method of establishing lost or obliterated corners.
3. Description of monument and accessories set to perpetuate the corner position.
4. Sketch of corner, show all pertinent data which can best be shown in a sketch example, corner marking, topography ties, position of accessories, etc.
5. Certification must be signed and sealed by Land Surveyor registered in the State of Montana.
6. Fill in Cross Index & Section Diagram at bottom of sheet.

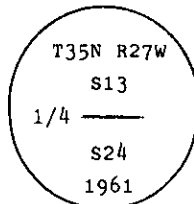
CERTIFIED CORNER RECORDATION

Corner 1/4 of Secs. 13 and 24 T. 35 N. R. 27 W. P.M.M. Lincoln County

I. 1913 G.L.O. original record by L. Lyman et al: Set a stone monument with two bearing trees.

1961 BLM remonumentation by David R. Cunningham et al: "The 1/4 sec. cor. of secs. 13 and 24, monumented with a granite stone, 12x8x6 ins., loosely set and mkd. 1/4 on the N. face, and witnessed by the original bearing trees.

At the corner point, set an iron post, 30 ins. long, 2 1/2 ins. diam., 26 ins. in the ground, in concrete, with brass cap mkd.



from which

The original bearing trees:

- A fir, 22 ins. diam., bears N50 1/2° E, 38 lks. dist., mkd. with an overgrown blaze. (Record)
- A fir, 19 ins. diam., bears S38 1/2° E, 50 lks. dist., mkd. with an overgrown blaze. (Record S36° E, 50 lks.)

The new bearing trees:

- A fir, 10 ins. diam., bears S46 1/2° E, 56 lks. dist., mkd. 1/4 S24 BT.
- A fir, 6 ins. diam., bears N20 3/4° W, 27 lks. dist., mkd. 1/4 S13 BT.

Bury the original stone alongside of the iron post."

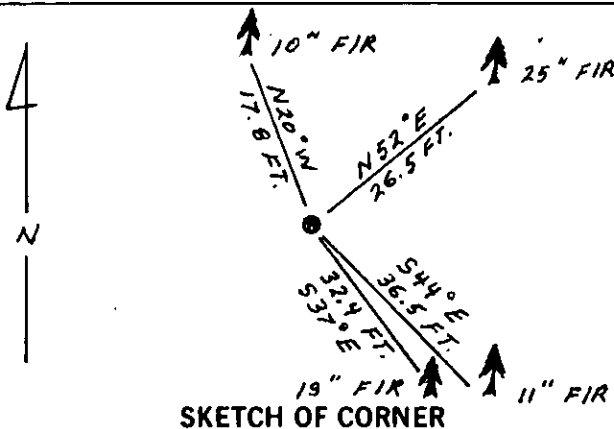
II. Found a 2 1/2 ins. diam. pipe, 4 ins. out of the ground, with BLM brass cap mkd. as shown, from which

- A douglas fir, 25 ins. diam., bears N52° E, 26.5 ft. (40 lks.) dist., no visible scribing.
- A douglas fir, 11 ins. diam., bears S44° E, 36.5 ft. (55 lks.) dist., no visible scribing.
- A douglas fir, 19 ins. diam., bears S37° E, 32.4 ft. (49 lks.) dist., no visible scribing.
- A douglas fir, 10 ins. diam., bears N20° W, 17.8 ft. (27 lks.) dist., no visible scribing.

III. Painted red bands around the bearing trees and attached Land Survey Monument and Bearing Tree signs.

Set a 6 ft. galvanized steel guard post with Land Survey Marker and Property Boundary decals, West, 3 ft.

Magnetic Declination: 20° East



SKETCH OF CORNER

CERTIFICATION

I, Steve Boyer
certify the information shown herein is true and correct.

Steve A. Boyer
Signature Ground Party Chief

I, Alvah F. Hughes
certify that this Corner Record correctly represents work performed by me or under my direction in compliance with the "Corner Recordation Act" (70-22-101, et seq., M.C.A.)

Alvah F. Hughes
Signature of Surveyor & Seal

Date: 1/6/92 Reg. No. 7322 LS

Employer: U.S. FOREST SERVICE

Office of Clerk and Recorder, County of Lincoln. This "corner

record" was filed for record on Jan 27, 1992

was noted on the cross-index plat and is assigned page No. 4674, in

book No. _____

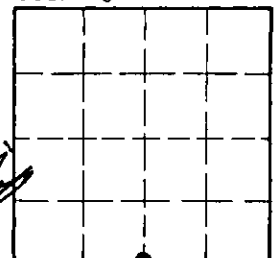
Coral M. Cunningham by Eric Bruch
County Official

N-23

35 N 27 W

Cross Index No. _____ T. _____ R. _____ PMM

Sec. 13



• - corner this sheet