

INSTRUCTIONS

1. Original and/or subsequent record used to evaluate the corner position.
2. Description of evidence found, note discrepancies in the record, state method of establishing lost or obliterated corners.
3. Description of monument and accessories set to perpetuate the corner position.
4. Sketch of corner, show all pertinent data which can best be shown in a sketch example, corner marking, topography ties, position of accessories, etc.
5. Certification must be signed and sealed by Land Surveyor registered in the State of Montana.
6. Fill in Cross Index & Section Diagram at bottom of sheet.

CERTIFIED CORNER RECORDATION

1/4 of Sec. 18
of Sec. 13

35 N.

27 W.

Lincoln

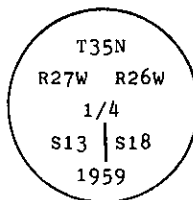
Corner _____ T. _____ R. _____ P.M.M. _____ County

I. 1894 G.L.O. original record by Abram L. Jaqueth: Set a wooden post with two bearing trees.

1915 H.E.S. original record by Elmer R. Johnson: Establish two bearing trees and a mound of earth.

1959 BLM remonumentation by David R. Cunningham: "The 1/4 sec. cor. of secs. 13 and 18, identical with cor. No. 1 of Homestead Entry Survey No. 332, monumented with the decayed remains of the original wooden post and witnessed by the remains of the original bearing trees.

At the corner point, set an iron post, 30 ins. long, 2 1/2 ins. diam., 28 ins. in the ground, in concrete, with brass cap mkd.



from which

The original H.E.S. bearing tree:

- A larch, 14 ins. diam., bears S47 1/4° E, 51 lks. dist., mkd. 1 HES 332. (Record)
- A larch, 12 ins. diam., bears N9 1/2° W, 52 lks. dist., mkd. 1 HES 332. (Record N11° 29' W, 51 lks.)

The new bearing trees:

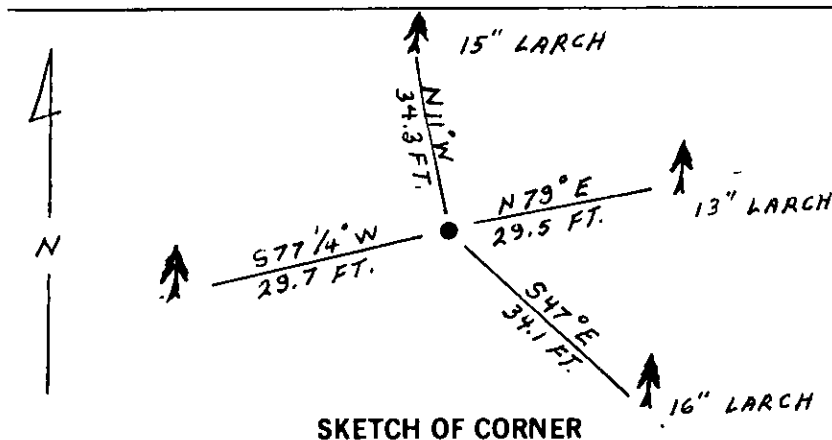
- A larch, 10 ins. diam., bears N79° E, 44 lks. dist., mkd. 1/4 S18 BT.
- A larch, 10 ins. diam., bears S74 1/4° W, 45 lks. dist., mkd. 1/4 S13 BT.

Bury the remains of the original wooden post and set a wooden post, 4 ins. square, 5 ft. long, alongside the iron post."

II. Found a 2 1/2 ins. diam. pipe, 3 ins. out of the ground, with BLM brass cap mkd. as shown (Dated: 1961) from which

- A larch, 13 ins. diam., bears N79° E, 29.5 ft. (45 lks.) dist., no visible scribing.
- A larch, 16 ins. diam., bears S47° E, 34.1 ft. (52 lks.) dist., visible scribing.
- A larch, 12 ins. diam., bears S77 1/4° W, 29.7 ft. (45 lks.) dist., no visible scribing.
- A larch, 15 ins. diam., bears N11° W, 34.3 ft. (52 lks.) dist., no visible scribing.

III. Painted red bands around the bearing trees and attached Land Survey Monument and Bearing Tree signs. Set a 6 ft. galvanized steel guard post with Land Survey Marker and Property Boundary decals, South, 3 ft. Magnetic Declination: 20° East



SKETCH OF CORNER

CERTIFICATION

Kenneth Kern

I, _____ certify the information shown herein is true and correct.

Kenneth R Kern
Signature Ground Party Chief

Alvah F. Hughes

I, _____ certify that this Corner Record correctly represents work performed by me or under my direction in compliance with the "Corner Recordation Act" (70-22101, et seq., M.C.A.)

Alvah F Hughes
Signature of Surveyor & Seal

Date: 1/6/92 Reg. No. 7322 LS

Employer: U.S. FOREST SERVICE

Office of Clerk and Recorder, County of Lincoln. This "corner record" was filed for record on Jan 27, 1992 was noted on the cross-index plat and is assigned page No. 4672, in book No. _____

Coral M Cummings by Bill Bucholtz
County Official

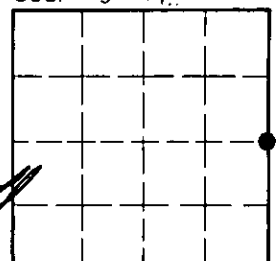
L-25

35 N

27 W

Cross Index No. _____ T. _____ R. _____ PMM

Sec. 13



• - corner this sheet