

INSTRUCTIONS

1. Original and/or subsequent record used to evaluate the corner position.
2. Description of evidence found, note discrepancies in the record, state method of establishing lost or obliterated corners.
3. Description of monument and accessories set to perpetuate the corner position.
4. Sketch of corner, show all pertinent data which can best be shown in a sketch example, corner marking, topography ties, position of accessories, etc.
5. Certification must be signed and sealed by Land Surveyor registered in the State of Montana.
6. Fill in Cross Index & Section Diagram at bottom of sheet.

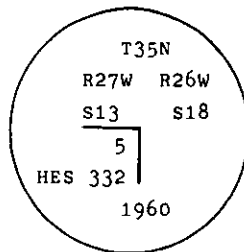
CERTIFIED CORNER RECORDATION

Corner 5 of HES 332 T. 35 N. R. 27 W. P.M.M. Lincoln County

I. 1915 H.E.S. original record by Elmer R. Johnson: Set a stone monument with two bearing trees and a mound of earth.

1960 B.L.M. remonumentation by David R. Cunningham et al: "Cor. No. 5 of Homestead Entry Survey No. 332, monumented by a slatestone, 24x10x8 ins., firmly set in the ground, mkd. 5 HES 332 on the SW face, and witnessed by one of the original bearing trees.

At the corner point, set an iron post, 30 ins. long, 2 1/2 ins. diam., 28 ins. in the ground, in concrete, with brass cap mkd.



from which

The original bearing tree, a fir, 13 ins. diam., bears N61°W, 38 lks. dist., mkd. 5 HES. (Record: N60°55'W, 38 lks.)

The new bearing tree, a fir, 6 ins. diam., bears S66 3/4°E, 135 lks. dist., mkd. 5 HES 332 BT.

Bury the original stone alongside and raise a mound of stone, 3 ft. base, 2 ft. high, W of the iron post."

II. Found a 2 1/2 ins. diam. pipe, flush with the ground, with BLM brass cap mkd. as shown, from which

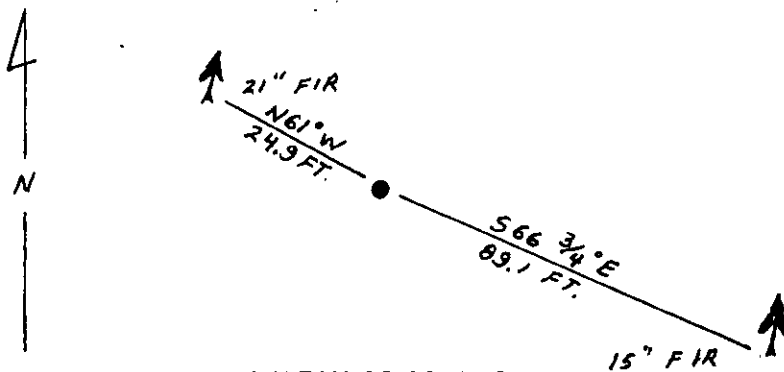
A fir, 21 ins. diam., bears N61°W, 24.9 ft. (38 lks.) dist., invisible scribe.

A fir, 15 ins. diam., bears S66 3/4°E, 89.1 ft. (135 lks.) dist., invisible scribe.

III. Painted red bands around the bearing trees and attached Land Survey Monument and Bearing Tree signs.

Set a 6 ft. galvanized steel guard post with Land Survey Marker and Property Boundary decals, East, 3 ft.

Magnetic declination: 20° East.



SKETCH OF CORNER

CERTIFICATION

I, Kenneth Kern
certify the information shown herein is true and correct.

Kenneth R Kern
Signature Ground Party Chief

I, Alvah F. Hughes
certify that this Corner Record correctly represents work performed by me or under my direction in compliance with the "Corner Recordation Act" (70-22-101, et seq., M.C.A.).

Alvah F. Hughes
Signature of Surveyor and Seal

Date: 1/6/92 Reg. No. 7322

Employer: U.S. FOREST SERVICE

Office of Clerk and Recorder, County of Lincoln. This "corner

record" was filed for record on Jan 27, 1992

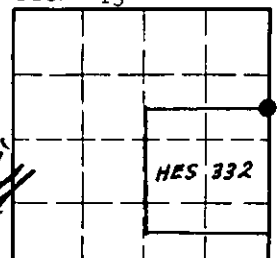
was noted on the cross-index plat and is assigned page No. 4671, in

book No. _____

Coral M Cummings by Bill Beck
County Official

5 HES 332 35 N 27 W
Cross Index No. _____ T. _____ R. _____ PMM

Sec. 13



• - corner this sheet