

INSTRUCTIONS

1. Original and/or subsequent record used to evaluate the corner position.
2. Description of evidence found, note discrepancies in the record, state method of establishing lost or obliterated corners.
3. Description of monument and accessories set to perpetuate the corner position.
4. Sketch of corner, show all pertinent data which can best be shown in a sketch example, corner marking, topography ties, position of accessories, etc.
5. Certification must be signed and sealed by Land Surveyor registered in the State of Montana.
6. Fill in Cross Index & Section Diagram at bottom of sheet.

CERTIFIED CORNER RECORDATION

Corner 4 of HES 332 T. 35 N. R. 27 W. P.M.M. Lincoln County

- I. 1915 H.E.S. record by Elmer R. Johnson: "Set for Cor. No. 4, a larch post 6x6x42 ins., 30 ins. in the ground, over a stone marked with a cross (x) marked 4 H.E.S. 332 on SE face, and a nail in top for the exact corner point, from which

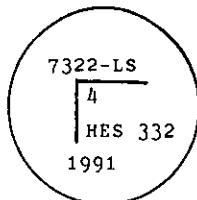
A cross (x) on a fir, 10 ins. dia., bears N13°46'W, 16 lks. dist.

A cross (x) on a fir, 9 ins. dia., bears S89°10'W, 37 lks. dist.; each blazed and scribed 4 H.E.S. 332 BT.

Raise a mound of earth 4 ft. base, 2 ft. high SE of corner.

- II. The corner and its accessories were not found, as its position lies in a clearcut.

- III. Corner 4 of H.E.S. 332 was considered lost and therefore reestablished by the Grant Boundary adjustment between corners 3 HES 332 and 5 HES 332. Corner positions as shown are based upon a closed traverse, performed with a total station instrument. At the computed position set a 2 1/2 ins. dia. by 30 in. long alum. pipe, 24 ins. in the ground, 3 1/4 in. diam. alum. cap marked as shown



From which

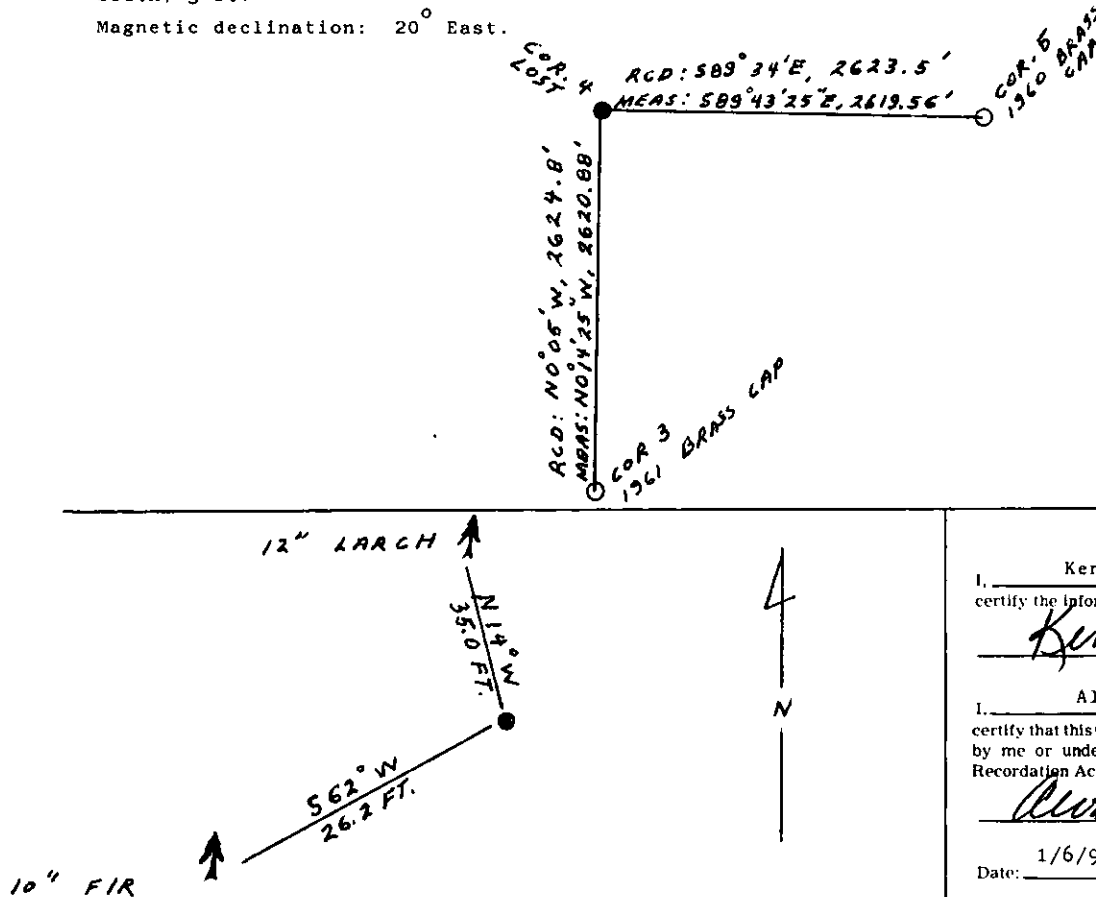
A fir, 10 ins. diam., bears S62°W, 26.2 ft. dist., mkd. 4 HES 332 BT.

A larch, 12 ins. diam., bears N14°W, 35.0 ft. dist., mkd. 4 HES 332 BT.

Painted red bands around the bearing trees and attached Land Survey Monument and Bearing Tree signs.

Set a 6 ft. galvanized steel guard post with Land Survey Marker and Property Boundary decals, South, 3 ft.

Magnetic declination: 20° East.



SKETCH OF CORNER

CERTIFICATION

I, Kenneth Kern

certify the information shown herein is true and correct.

Kenneth R Kern
Signature Ground Party Chief

I, Alvah F. Hughes

certify that this Corner Record correctly represents work performed by me or under my direction in compliance with the "Corner Recordation Act" (70-22-101, et seq., M.C.A.)

Alvah F Hughes
Signature of Surveyor & Seal

Date: 1/6/92 Reg. No. 7322 LS 7322 LS

Employer: U.S. FOREST SERVICE

Office of Clerk and Recorder, County of Lincoln. This "corner

record" was filed for record on Jan 27, 1992

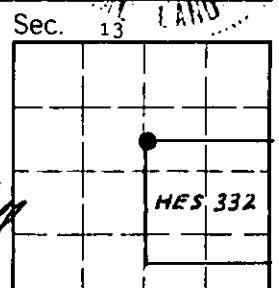
was noted on the cross-index plat and is assigned page No. 4670, in

book No. _____

Coral McCumings by Bill Brischoff
County Official

4 HES 332 35 N 27 W

Cross Index No. _____ T. _____ R. _____ P.M.M.



• - corner this sheet