

INSTRUCTIONS

1. Original and/or subsequent record used to evaluate the corner position.
2. Description of evidence found, note discrepancies in the record, state method of establishing lost or obliterated corners.
3. Description of monument and accessories set to perpetuate the corner position.
4. Sketch of corner, show all pertinent data which can best be shown in a sketch example, corner marking, topography ties, position of accessories, etc.
5. Certification must be signed and sealed by Land Surveyor registered in the State of Montana.
6. Fill in Cross Index & Section Diagram at bottom of sheet.

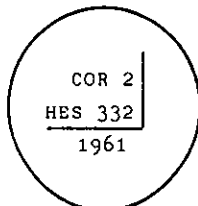
CERTIFIED CORNER RECORDATION

Corner 2 of HES 332 T. 35 N. R. 27 W. P.M.M. Lincoln County

- I. 1915 H.E.S. original record by Elmer R. Johnson: Set a stone monument with two bearing trees and a mound of earth.

1961 B.L.M. remonumentation by David R. Cunningham et al: "Cor. No. 2 of Homestead Entry Survey No. 332, monumented with a slate stone, 20x12x6 ins., firmly set and mkd. 2 HES 332 on the NW face, and witnessed by the remains of the original bearing trees.

At the corner point; set an iron post, 30 ins. long, 2 1/2 ins. diam., 28 ins. in the ground, in concrete, with brass cap mkd.



from which

The remains of the original bearing trees:

A stump, 18 ins. diam., bears N60° E, 31 lks. dist., mkd. 2 HES 332.

(Record: N58° 5' E, 33 lks.)

A dead fir, 14 ins. diam., bears S30 3/4° E, 15 lks. dist., mkd. 2 HES 332

(Record: S28° 35' E, 15 lks.)

The new bearing trees:

A fir, 6 ins. diam., bears N68° E, 15 lks. dist., mkd. COR 2 HES 332 BT.

A fir, 12 ins. diam., bears S22° W, 73 lks. dist., mkd. COR 2 HES 332 BT.

Bury the original stone alongside of the iron post."

- II. Found a 2 1/2 ins. diam. pipe, 4 ins. out of the ground, with BLM brass cap mkd. as shown, from which

A stump, 20 ins. diam., bears N60° E, 20.5 ft. (31 lks.) dist., visible scribe.

A douglas fir, 8 ins. diam., bears N68° E, 9.9 ft. (15 lks.) dist., visible scribe.

A stump, 14 ins. diam., bears S30 45' W, 9.9 ft. (15 lks.) dist., visible scribe.

(Record: S30 3/4° E, 15 lks.)

A high stump, 14 ins. diam., bears S22° W, 48.2 ft. (73 lks.) dist., visible scribe.

- III. Established one new bearing tree

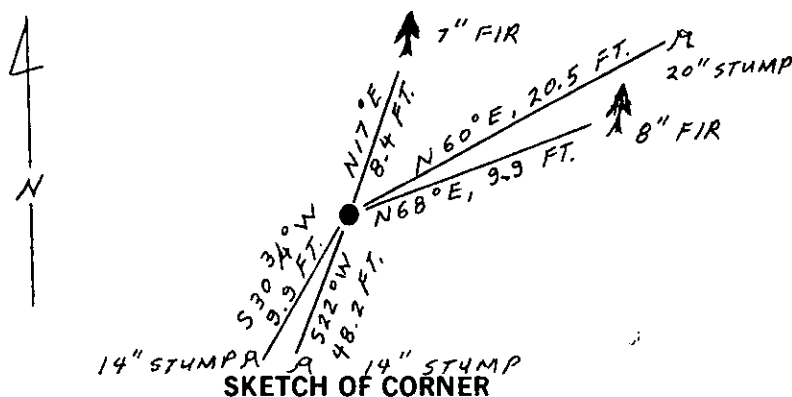
A douglas fir, 7 ins. diam., bears N17° E, 8.4 ft. dist., mkd. 2 HES 332 BT.

Painted red bands around the bearing trees and attached Land Survey Monument and Bearing Tree signs.

Set a 6 ft. galvanized steel guard post with Land Survey Marker and Property Boundary decals.

East, 3 ft.

Magnetic declination: 20° East.



CERTIFICATION

Kenneth Kern

I, Kenneth Kern, certify the information shown herein is true and correct.

Signature Ground Party Chief

Alvah F. Hughes

I, Alvah F. Hughes, certify that this Corner Record correctly represents work performed by me or under my direction in compliance with the "Corner Recordation Act" (70-22-101, et seq., M.C.A.)

Signature of Surveyor & Seal

8/6/91

Date: 8/6/91 Reg. No. 732E BS

Employer: U.S. FOREST SERVICE

Office of Clerk and Recorder, County of Lincoln. This "corner

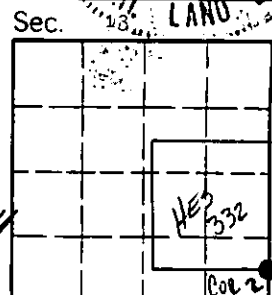
record" was filed for record on Sept 16, 1991

was noted on the cross-index plat and is assigned page No. 4588, in

book No.

Coral M. Cummings by Bill Buckhoff
County Official

Cross Index No. 2 HES 332 T. 35 N R. 27 W P.M.M.



• - corner this sheet