

INSTRUCTIONS

1. Original and/or subsequent record used to evaluate the corner position.
2. Description of evidence found, note discrepancies in the record, state method of establishing lost or obliterated corners.
3. Description of monument and accessories set to perpetuate the corner position.
4. Sketch of corner, show all pertinent data which can best be shown in a sketch example, corner marking, topography ties, position of accessories, etc.
5. Certification must be signed and sealed by Land Surveyor registered in the State of Montana.
6. Fill in Cross Index & Section Diagram at bottom of sheet.

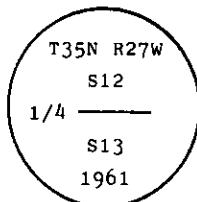
CERTIFIED CORNER RECORDATION

Corner 1/4 of Secs. 12 and 13 T. 35 N. R. 27 W. P.M.M. Lincoln County

- I. 1913 G.L.O. original record by L. Lyman et al: Set a stone monument with two bearing trees.

1961 BLM remonumentation by David R. Cunningham et al: "The 1/4 sec. cor. of secs. 12 and 13, monumented with a limestone, 14x10x8 ins., firmly set and mkd. 1/4 on the N. face, and witnessed by the remains of the original bearing trees.

At the corner point, set an iron post, 30 ins. long, 2 1/2 ins. diam., 26 ins. in the ground, in concrete, with brass cap mkd.



from which

The remains of the original bearing trees:

- A dead fir, 8 ins. diam., bears S3 1/4° W, 47 lks. dist., mkd. 1/4 S13 BT. (Record)
 A dead fir, 6 ins. diam., bears N35 1/2° W, 8 lks. dist., mkd. 1/4 S12 BT.
 (Record N37 1/2° W, 8 lks.)

The new bearing trees:

- A fir, 9 ins. diam., bears N36 1/2° E, 44 lks. dist., mkd. 1/4 S12 BT.
 A fir, 9 ins. diam., bears S29° E, 94 lks. dist., mkd. 1/4 S13 BT.

Bury the original stone, alongside of the iron post."

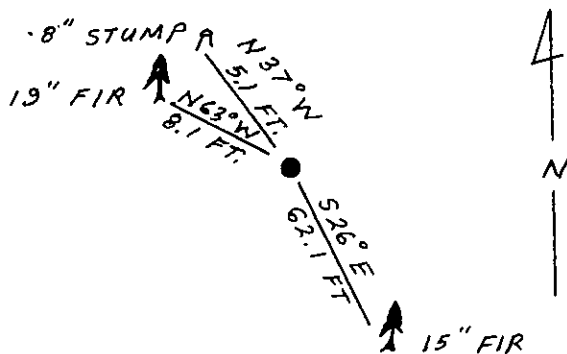
- II. Found a 2 1/2 ins. diam. pipe, 3 ins. out of the ground, with BLM brass cap mkd. as shown, from which

- A fir, 15 ins. diam., bears S26° E, 62.1 ft. (94 lks.) dist., no visible scribing.
 A tree stump, 8 ins. diam., bears N37° W, 5.1 ft. (8 lks.) dist., no visible scribing.

- III. Establish one new bearing tree:

- A fir, 19 ins. diam., bears N63° W, 8.1 ft. dist., mkd. 1/4 S12 BT.

Painted red bands around the bearing trees and attached Land Survey Monument and Bearing Tree signs.
 Set a 6 ft. galvanized steel guard post with Land Survey Marker and Property Boundary decals, East, 3.7 ft.
 Magnetic Declination: 20° East



SKETCH OF CORNER

CERTIFICATION

- I. Kenneth Kern
 certify the information shown herein is true and correct.

Kenneth R. Kern
 Signature Ground Party Chief

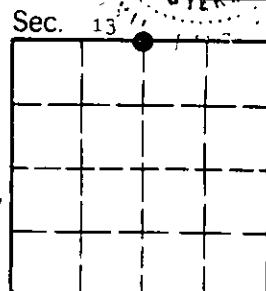
- II. Alvah F. Hughes
 certify that this Corner Record correctly represents work performed by me or under my direction in compliance with the "Corner Recordation Act" (70-22-101 et seq., M.C.A.)

Alvah F. Hughes
 Signature of Surveyor & Seal
 Date: 8/6/91 Reg. No. 7322
 Employer: U.S. FOREST SERVICE

Office of Clerk and Recorder, County of Lincoln. This "corner record" was filed for record on Sept 16, 1991 was noted on the cross-index plat and is assigned page No. 4583, in book No. Oral M. Cummings by Bill Bruckhoff

County Official

Cross Index No. J-23 T. 35 N. R. 27 W. P.M.M.



• - corner this sheet