

INSTRUCTIONS

1. Original and/or subsequent record used to evaluate the corner position.
2. Description of evidence found, note discrepancies in the record, state method of establishing lost or obliterated corners.
3. Description of monument and accessories set to perpetuate the corner position.
4. Sketch or corner, show all pertinent data which can best be shown in a sketch example, corner marking, topography ties, position of accessories, etc.
5. Certification must be signed and sealed by Registered Land Surveyor in State of Montana.
6. Fill in Cross Index & Section Diagram at bottom of sheet.

CERTIFIED CORNER RECORDATION

Corner C-W 1/16 Section 10 T. 35 N. R. 27 W. P.M.M. Lincoln County

RECORD

There is no survey or corner recordation on file for this corner.

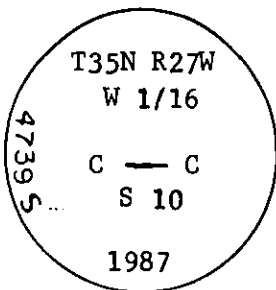
FOUND

There was no evidence of a monumented corner found.

CORNER PERPETUATION

At the corner point:

Set a 3/4" x 30" aluminum rod with a 3 1/4" diameter aluminum cap, approx. 26" in the ground, marked:



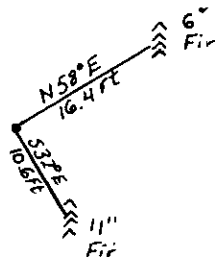
from which bearing trees:

A fir , 6 ins. in dia., bears N 58° E, 16.4 ft. dist., mkd. CW 1/16 S10 BT.

A fir , 11 ins. in dia., bears S 32° E, 10.6 ft. dist., mkd. CW 1/16 S10 BT.

Set a galvanized steel post with a survey marker decal and a property boundary decal 3 ft. North of the aluminum cap.

Painted red bands around the bearing trees and painted the scribing.
Attached bearing tree signs and attached Survey Monument signs.



CERTIFICATION

I, _____
certify the information shown herein is true and correct.

Signature Ground Party Chief

Philip A. Helps

I, _____
certify that this Corner Record correctly represents work performed by me or under my direction in compliance with the "Corner Recordation Act" (70-22-101, et seq., M.D.A.)

Signature of Surveyor & Seal

Date: 11/87 Reg. No. 4739 S

Employer: F & H Land Surveying, Whitefish

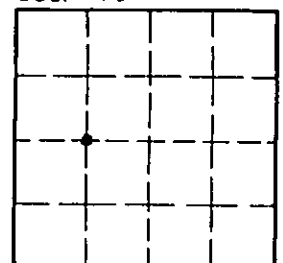
Declination 20° E. SKETCH OF CORNER

Office of Clerk and Recorder, County of Lincoln. This "corner record" was filed for record on the Nov 30 day of 1987, was noted on the cross-index plat and is assigned page No. 3737, in book No. _____

County Official Janet H. Sigel by Sue S. Schell

Cross Index No. G - 14 T. 35 N. R. 27 W. P.M.M.

Sec. 10



• - corner this sheet