

## INSTRUCTIONS

1. Original and/or subsequent record used to evaluate the corner position.
2. Description of evidence found, note discrepancies in the record, state method of establishing lost or obliterated corners.
3. Description of monument and accessories set to perpetuate the corner position.
4. Sketch or corner, show all pertinent data which can best be shown in a sketch example, corner marking, topography ties, position of accessories, etc.
5. Certification must be signed and sealed by Registered Land Surveyor in State of Montana.
6. Fill in Cross Index & Section Diagram at bottom of sheet.

## CERTIFIED CORNER RECORDATION

Corner S. 1/4 Cor. Section 10 T. 35 N. R. 27 W. P.M.M. Lincoln County

ORIGINAL RECORD G.L.O. 1913

Set a limestone, 12x10x8 ins. 8 ins. in the ground, for 1/4 sec. cor., mkd. 1/4 on N. face, from which

A tamarack, 8 ins. in dia., bears N 44° E, 61 lks. dist., mkd. 1/4 S 10 BT.

A tamarack, 22ins. in dia., bears S 33° W, 65 lks. dist., mkd. 1/4 S 15 BT.

B.L.M. REMONUMENTATION 1970

The 1/4 sec. cor. of secs. 10 and 15, monumented with a limestone, 12x10x8 ins., firmly set, mkd. 1/4 on the N. face, and witnessed by the original bearing trees:

A larch, 12 ins. diam., bears N 44° E, 61 lks. dist., mkd. 1/4 S 10 BT.

A matured larch, 30 ins. diam., bears S 33° W, 65 lks. dist., mkd. 1/4 S 15 BT.

At the corner point

Set an iron post, 30 ins. long, 2 1/2 ins. diam., 24 ins. in the ground, with brass cap mkd.

T35N R27W from which a new bearing tree:

1/4 S 10  
S 15 A spruce, 7 ins. diam., bears S 52° W 89 lks. dist., mkd. 1/4 S 15 BT.

1970

bury the original stone alongside the iron post.

EVIDENCE FOUND

Found a BLM brass cap, 6 ins. above the ground, mkd. as shown above, from which:

A larch, 12 ins. dia., bears N 44° E, 40.0 ft. dist., scribing visible. (GLO 1913 BT)

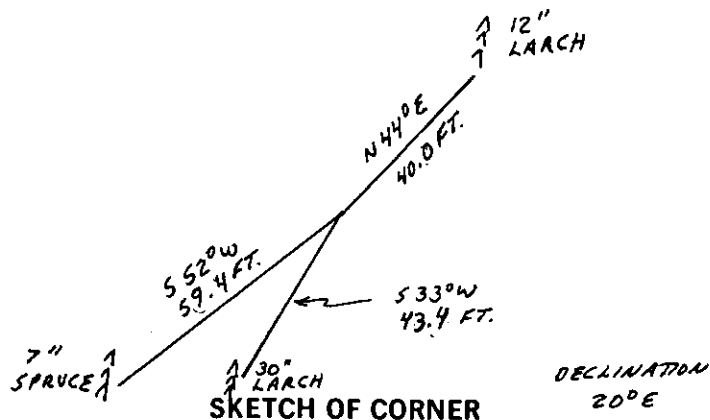
A larch, 30 ins. dia., bears S 33° W, 43.4 ft. dist., scribing visible. (GLO 1913 BT)

A spruce, 7 ins. dia., bears S 52° W, 59.4 ft. dist., scribing visible. (BLM 1970 BT)

CORNER PERPETUATION

Set a galvanized steel post, with Survey Marker decal, 3 ft. north of the brass cap.

Painted red bands around the bearing trees and painted the scribing and blazing. Attached bearing tree signs and attached Land Survey Monument signs.



## CERTIFICATION

I, \_\_\_\_\_  
certify the information shown herein is true and correct.

Signature Ground Party Chief

Philip A. Helps

I, \_\_\_\_\_  
certify that this Corner Record correctly represents work performed by me or under my direction in compliance with the "Corner Recordation Act" (70-27-101, et seq., M.D.A.)

Signature of Surveyor & Seal

Date: 7/87 Reg. No. 4739 S

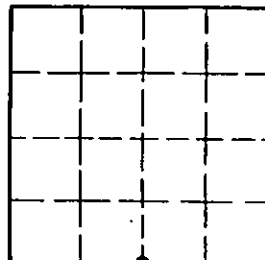
Employer: F & H Ladd Surveying, Whitefish

Office of Clerk and Recorder, County of Lincoln. This "corner record" was filed for record on the October 6 day of 1987 was noted on the cross-index plat and is assigned page No. 3686, in book No. \_\_\_\_\_

County Official Janet B. Sugil by Bill Smith Deputy

Cross Index No. J - 15 T. 35 N. R. 27 W. P.M.M.

Sec. 10



• corner this sheet