

- INSTRUCTIONS
1. Original and subsequent record used to evaluate the corner position.
 2. Description of evidence found, note discrepancies in the record, state method of establishing lost or obliterated corners.
 3. Description of monument and accessories set to perpetuate the corner position.
 4. Sketch or corner, show all pertinent data which can best be shown in a sketch example, corner marking, topography ties, position of accessories, etc.
 5. Certification must be signed and sealed by Registered Land Surveyor in State of Montana.
 6. Fill in Cross Index & Section Diagram at bottom of sheet.

CERTIFIED CORNER RECORDATION

Corner E. 1/4 Cor. of Section 2 T. 35 N. R. 27 W. P.M.M. Lincoln County

ORIGINAL RECORD G.L.O. 1913

Set a limestone, 12x7x6 ins., 8 ins. in the ground, for 1/4 sec. cor. mkd. 1/4 on W. face, from which:

A fir, 7 ins. in dia., bears N 35 1/4° E, 28 lks. dist., mkd. 1/4 S 1 BT.

A fir, 5 ins. in dia., bears N 88 1/4° E, 14 lks. dist., mkd. 1/4 S 2 BT.

B.L.M. REMONUMENTATION 1960

The 1/4 sec. cor. of secs. 1 and 2, monumented with a limestone, 10x8x6 ins., firmly set and mkd. 1/4 on the W. face, and witnessed by the remains of the original bearing trees.

At the corner point, Set an iron post, 30 ins. long, 2 1/2 ins. diam., 26 ins. in the ground, in concrete, with brass cap mkd.

T35N R27W

from which the remains of the original bearing trees:

1/4
S 2 | S 1
1960

A stump, 9 ins. diam., bears N 35 1/4° E, 28 lks. dist., mkd. 1/4 S 1 BT. (Rec.)

A dead fir, 7 ins. diam., bears N 88 1/4° W, 14 lks. dist., mkd. 1/4 S 2 BT. (Record)

the new bearing trees:

A larch, 6 ins. diam., bears N 42 1/2° E, 72 lks. dist., mkd. 1/4 S 1 BT.

A fir, 9 ins. diam., bears N 80° W, 54 lks. dist., mkd. 1/4 S 2 BT.

Bury the original stone alongside and raise a mound of stone, 3 ft. base, 2 ft. high, W. of the iron post.

EVIDENCE FOUND

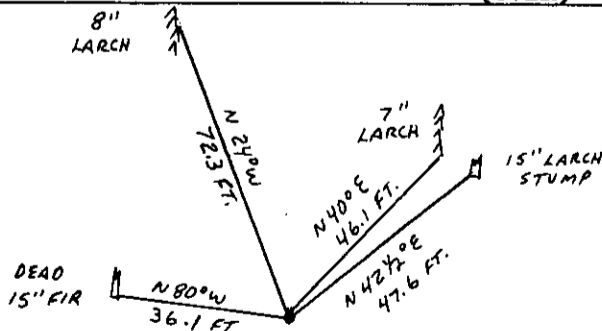
Found a BLM brass cap, 4 ins. above the ground, mkd. as shown above, from which:

A 15 ins. larch stump, bears N 42 1/2° E, 47.6 ft. dist., mkd. with an overgrown blaze. (BLM 1960 BT).

A dead 15 ins. fir, broken off at a height of approx. 12 ft., bears N 80° W, 36.1 ft. dist., with scribing visible. (BLM 1960 BT).

Both of the original G.L.O. 1913 bearing trees were searched for, but no evidence was found.

(OVER)



DECL. 21° E

SKETCH OF CORNER

CERTIFICATION

I, _____
certify the information shown herein is true and correct.

Signature Ground Party Chief

Philip A. Helps

I, _____
certify that this Corner Record correctly represents work performed by me or under my direction in compliance with the "Corner Recordation Act" (70-22-101, et seq., M.D.A.)

Signature of Surveyor & Seal

Date: 9/87 Reg. No. 4739 S

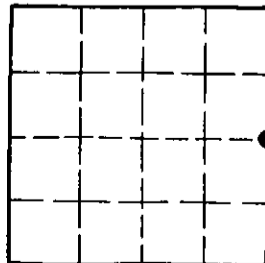
Employer: F & H Land Surveying, Whitefish

Office of Clerk and Recorder, County of Lincoln. This "corner record" was filed for record on the October 6 day of 1987, was noted on the cross-index plat and is assigned page No. 3669, in book No. _____

Janet B. Sugil by Sir Sugil
County Official Deputy

Cross Index No. C - 21 T. 35 N R. 27 W PMM

Sec. 2



• - corner this sheet

CORNER PERPETUATION

The new bearing trees:

A 7 ins. larch bears N 40° E, 46.1 ft. dist., mkd. 1/4 S 1 BT.

An 8 ins. larch bears N 24° W, 72.3 ft. dist., mkd. 1/4 S 2 BT.

Set a galvanized steel guard post with a Survey Marker 3 ft. East of the brass cap. Painted red bands around the bearing trees and painted the blazing and scribing. Attached bearing tree signs and attached Survey Monument signs.