

INSTRUCTIONS

1. Original and subsequent record used to evaluate the corner position.
2. Description of evidence found, note discrepancies in the record, state method of establishing lost or obliterated corners.
3. Description of monument and accessories set to perpetuate the corner position.
4. Sketch or corner, show all pertinent data which can best be shown in a sketch example, corner marking, topography ties, position of accessories, etc.
5. Certification must be signed and sealed by Registered Land Surveyor in State of Montana.
6. Fill in Cross Index & Section Diagram at bottom of sheet.

CERTIFIED CORNER RECORDATION

Corner Cor. No. 5 H.E.S. 337 T. 35 N. R. 27 W. P.M.M. Lincoln County
(Located in Sec. 2)

ORIGINAL RECORD U.S.D.A. 1915

Set for Cor. No. 5, a limestone, 24x14x6 ins. 14 ins. in the ground, mkd. 5 HES 337 on N. face, and a cross (x) on top for the exact corner point, from which:

A cross (x) on a fir, 8 ins. diam., bears S 59° 55' E, 38 lks. dist.

A cross (x) on a fir, 14 ins. diam., bears N 41° 40' W, 48 lks. dist.

each blazed and scribed 5 HES 337 BT. Raise a mound of earth, 4 ft. base, 2 ft. high, N. of cor.

B.L.M. REMONUMENTATION 1960

Cor. No. 5 of HES No. 337, identical with Cor. No. 1 of HES No. 336, monumented with a limestone 24x14x6 ins., loosely set and mkd. 5 HES 337 on the N. face, and witnessed by the remains of the original bearing trees.

At the corner point, set an iron post, 30 ins. long, 2 1/2 ins. diam., 26 ins. in the ground, in concrete, with brass cap mkd.

T35N R27W from which the remains of the original bearing trees:

HES 337

5
S 21° 1' E
1960

A fir, 16 ins. diam., bears S 39° 35' E, 38 lks. dist., mkd. with an overgrown blaze. (Record)

A stump, 12 ins. diam., bears N 41° 40' W, 48 lks. dist., mkd. 5 HES 337 BT. (Rec)

The new bearing tree: A fir, 5 ins. diam., bears N 20 3/4° E, 27 lks. dist. mkd. 5 HES 337 BT.

Bury the original stone alongside and raise a mound of stone, 3 ft. base, 2 ft. high, N. of the iron post.

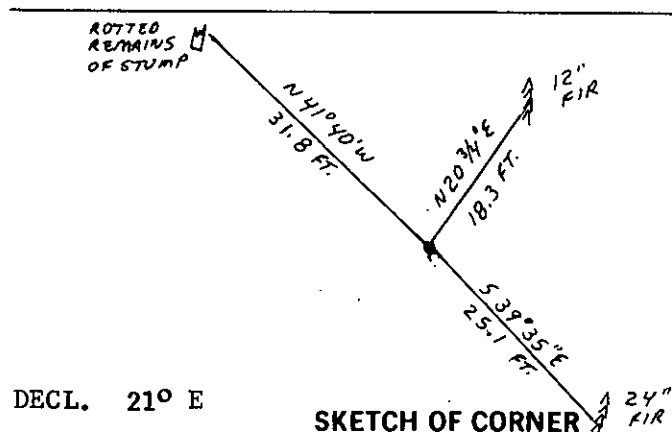
EVIDENCE FOUND

Found a BLM brass cap, 3 ins. above the ground, mkd. as shown above, from which:

A fir, 24 ins. diam., bears S 39° 35' E, 25.1 ft. dist. mkd. with an overgrown blaze. (USDA 1915 BT)

The rotted remains of a stump, bears N 41° 40' W, 31.8 ft. dist. with scribing visible. (USDA 1915 BT)

(OVER)



DECL. 21° E SKETCH OF CORNER

CERTIFICATION

I, _____
certify the information shown herein is true and correct.

Signature Ground Party Chief

I, Philip A. Helps

certify that this Corner Record correctly represents work performed by me or under my direction in compliance with the "Corner Recordation Act" (70-22-102, et seq., M.D.A.)

Signature of Surveyor & Seal

Date: 9/87 Reg. No. 4739 S

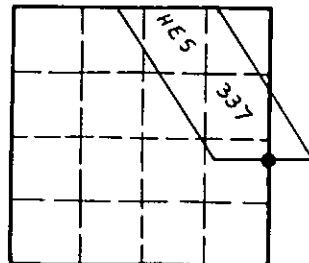
Employer: F & H Land Surveying, Whitefish

Office of Clerk and Recorder, County of Lincoln. This "corner record" was filed for record on the October 6 day of 1987, was noted on the cross-index plat and is assigned page No. 3666, in book No. _____

Janet E. Sugil by Bill Buschhoff
County Official Deputy

Cross Index No. _____ T. 35 N. R. 27 W. PMM

Sec. 2



• - corner this sheet

(CONT'D)

A fir, 12 ins. diam., bears N 20 3/4° E, 18.3 ft. dist., mkd with an overgrown blaze. (BLM 1960 BT)
Mound of stone North of the brass cap.

CORNER PERPETUATION

Set a galvanized steel guard post with a Property Boundary decal and a Survey Monument decal, 3 ft. east of the brass cap. Painted red bands around the bearing trees and painted the scribing and blazing. Attached bearing tree signs and attached Land Survey Monument signs.