

## INSTRUCTIONS

1. Original and subsequent record used to evaluate the corner position.
2. Description of evidence found, note discrepancies in the record, state method of establishing lost or obliterated corners.
3. Description of monument and accessories set to perpetuate the corner position.
4. Sketch or corner, show all pertinent data which can best be shown in a sketch example, corner marking, topography ties, position of accessories, etc.
5. Certification must be signed and sealed by Registered Land Surveyor in State of Montana.
6. Fill in Cross Index & Section Diagram at bottom of sheet.

## CERTIFIED CORNER RECORDATION

Corner Cor. No. 2 H.E.S. 337 T. 35 N. R. 27 W. P.M.M. Lincoln County  
 (Located in Sec. 2)  
ORIGINAL RECORD U.S.D.A. 1915

Set for Cor. No. 2, a larch post 4x4x42 ins., 30 ins. in the ground, over a stone mkd. with a cross (x) mkd. 2 H.E.S. 337 on S.W. face, and a nail in top for the exact corner point, from which

A cross (x) on a larch 8 ins. dia., bears S 54° 15' E, 8 lks. dist.

A cross (x) on a larch 22 ins. dia., bears N 37° 20' E, 40 lks. dist.

each blazed and scribed 2 H.E.S. 337 BT. Raise a mound of earth, 4 ft. base, 2 ft. high, S.W. of corner.

B.L.M. REMONUMENTATION 1960

Cor. No. 2 of H.E.S. 'No. 337, monumented with a wooden post, 3 1/2 ft. long, 4 ins. sq., firmly set and mkd. 2 HES 337 on the S.W. face, and witnessed by the remains of the original bearing trees. At the corner point

Set an iron post, 30 ins. long, 2 1/2 ins. dia., 26 ins. in the ground, in concrete, with brass cap mkd.

from which the remains of the original bearing trees:

T36N R27W  
S 35

A stump, 16 ins. diam., bears N 39° E, 42 lks. dist., visible marks  
S 337 BT. (Record: N 37° 20' E, 40 lks.)

2  
HES 337 S2  
T35N  
1960

A larch, 13 ins. diam., bears S 54 1/2° E, 8 lks. dist., mkd with an overgrown blaze. (Record)

The new bearing trees:

A larch, 6 ins. diam., bears N 41 1/2° E, 58 lks. dist., mkd. 2 HES 337 BT.

A larch, 5 ins. diam., bears S 23 1/4° W, 27 lks. dist., mkd. 2 HES 337 BT.

Bury the original post alongside and raise a mound of stone, 3 ft. base, 2 ft. high, S.W. of the iron post.

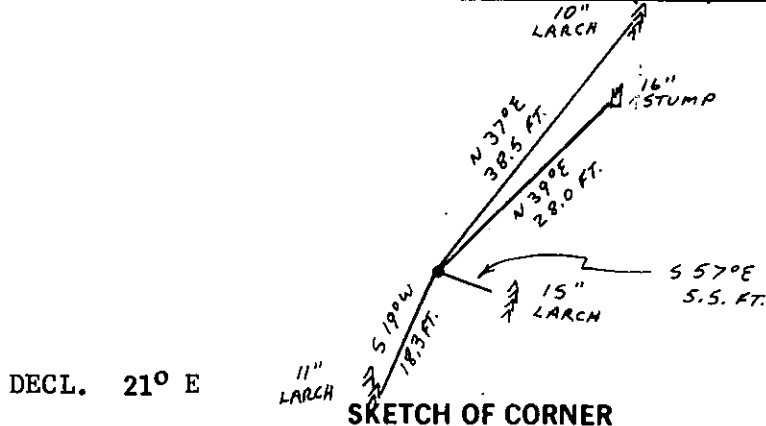
EVIDENCE FOUND

Found a BLM brass cap, 4 ins. above the ground, mkd. as shown above, from which:

A stump, 16 ins. diam., bears N 39° E, 28.0 ft. dist., with scribing visible. (USDA 1915 BT)

A larch, 15 ins. diam., bears S 57° E, 5.5 ft. dist., mkd. with an overgrown blaze. (USDA 1915 BT)

(OVER)



DECL. 21° E  
SKETCH OF CORNER

## CERTIFICATION

I, \_\_\_\_\_  
 certify the information shown herein is true and correct.

Signature Ground Party Chief

I, Philip A. Helps

certify that this Corner Record correctly represents work performed by me or under my direction in compliance with the "Corner Recordation Act" (70-22-101, et seq., M.D.A.)

Signature of Surveyor & Seal

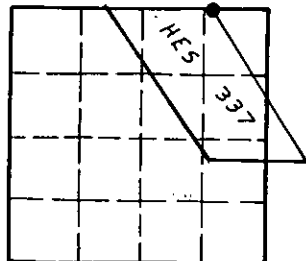
Date: 9/87 Reg. No. 4739 S

Employer: F & H Land Surveying, Whitefish

Office of Clerk and Recorder, County of Lincoln. This "corner record" was filed for record on the October 6 day of 1987, was noted on the cross-index plat and is assigned page No. 3663, in book No. \_\_\_\_\_

Cross Index No. \_\_\_\_\_ T. 35 N. R. 27 W. P.M.M.

Sec. 2



• corner this sheet

(CONT'D)

A larch, 10 ins. diam., bears N 37° E, 38.5 ft. dist., mkd. with an overgrown blaze.  
(BLM 1960 BT) (Rec. N 41 1/2° E)

A larch, 11 ins. diam., bears S 19° W, 18.3 ft. dist., mkd. with an overgrown blaze.  
(BLM 1960 BT) (Rec. S 23 1/4° W)

Mound of stone S.W. of the brass cap.

CORNER PERPETUATION

Set a galvanized steel guard post with a Property Boundary decal and a Survey Marker decal 3 ft. S.E. of the brass cap. Painted red bands around the bearing trees and painted the scribing and blazing. Attached bearing tree signs and attached Land Survey Monument signs.