

CERTIFIED LAND CORNER RECORDATION

DESCRIPTION OF CORNER EVIDENCE FOUND, AND ORIGINAL RECORD (IF KNOWN)

$\frac{1}{4}$ Cor. between Secs. 7 and 8 of Twp. 35 N., R. 27 W., M.P.M.
Reported: Limestone 24"x12"x7" - 18" in the ground marked $\frac{1}{4}$ on West face
from which a 6" fir bears S 52 $\frac{1}{4}$ E 18 lks. marked $\frac{1}{4}$ S 8 B T and a 24" fir
bears S 20 W 36 lks.
NOT FOUND

$\frac{1}{4}$ Corner between Sections 7 and 18 of Twp. 35 N., R. 27 W., M.P.M.
Reported: a 38" larch for corner marked $\frac{1}{4}$ S 7 on the North and S 18 on South
from which a 5" fir bears N 15 $\frac{1}{2}$ E 40 lks marked $\frac{1}{4}$ S 7 B T (Not found)
and a 30" larch bears S 6 $\frac{1}{2}$ E 57 lks. marked $\frac{1}{4}$ S 18 B T Found legible.
From 30 " larch witness tree stump found a 34" larch stump apparently cut
below reported markings. Position of stump agrees exactly for bearing
and distance as reported from existing witness stump.

DESCRIPTION OF MONUMENT AND ACCESSORIES ESTABLISHED
TO PERPETUATE THE ORIGINAL LOCATION OF THIS CORNER:

Because no evidence of the $\frac{1}{4}$ corner was found we ran a transit line from
the corner for Secs. 7, 8, 17 & 18 T. 35 N., R. 27 W. M.P.M. (which is a stone
in place with two witness trees standing) to the corner for Sections 5,6,7 & 8
which is a stone in place with witnesses.
We found the distance to be 5290.8 feet and established the $\frac{1}{4}$ Corner between
said Sections 7 and 8 at the half way point (2645.4 feet on line between the
two described Section corners.
For the $\frac{1}{4}$ Corner we set a 34" steel bar 6" above ground 18 feet east of the
east bank of Pinkham Creek at 2 feet east of bottom of steep west slope -
from which a 6" fir bears S 59 E 19.7 feet marked $\frac{1}{4}$ S 8 B T
For $\frac{1}{4}$ Cor. between Secs 7 and 18 drove a 3/4" steel rod in center of stump
of tree marked for original corner and tagged witness stump with std BT tag.

SKETCH, WITH COURSE AND DISTANCE TO ADJACENT CORNERS IF DETERMINED IN THIS SURVEY.
(MAY SKETCH OR PASTE REPRODUCTION ON REVERSE SIDE.)

Surveyor's Seal

I, J. W. Minneman
certify that the information shown herein is true and
correct.

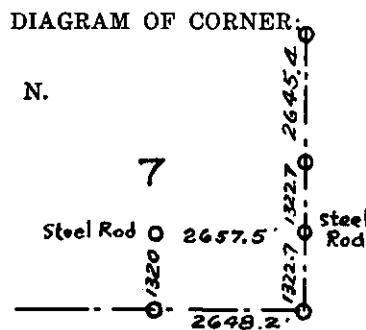
J. W. Minneman
Signature of Ground Party Chief

I, J. W. Minneman
certify that I have carefully performed or reviewed the
work done on the diagrammed corner as reported on this
recording form and approve the same.

J. W. Minneman
Signature of Surveyor

DIAGRAM OF CORNER.

N.



= Corner recorded on the sheet

534 ES
Registration Number

Office of Clerk and Recorder, County of LINCOLN, LIBBY, MONTANA

This "corner record" was filed for record on the 5th day of October 1964, was noted on the cross-index plat and is
assigned page No. 24, in book No. 1

M. M. MANSEFIELD, By: Mac Watson
County Official Deputy.

STATE OF MONTANA
COUNTY OF LINCOLN

Filed 5th day of October A. D. 1964

at 10:45 M. Wm. J. Moore
County Clerk

By Wm. J. Moore
Deputy