

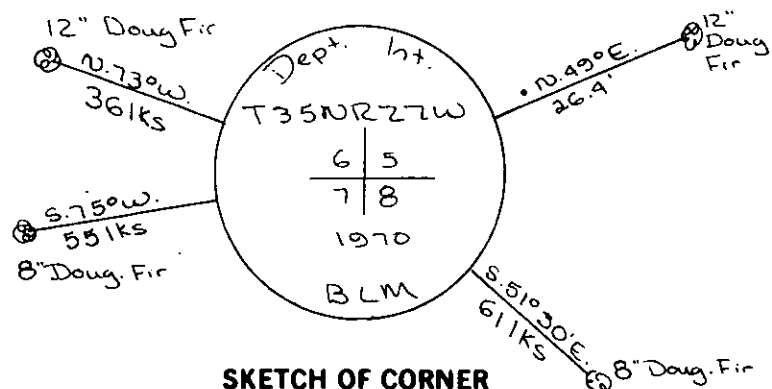
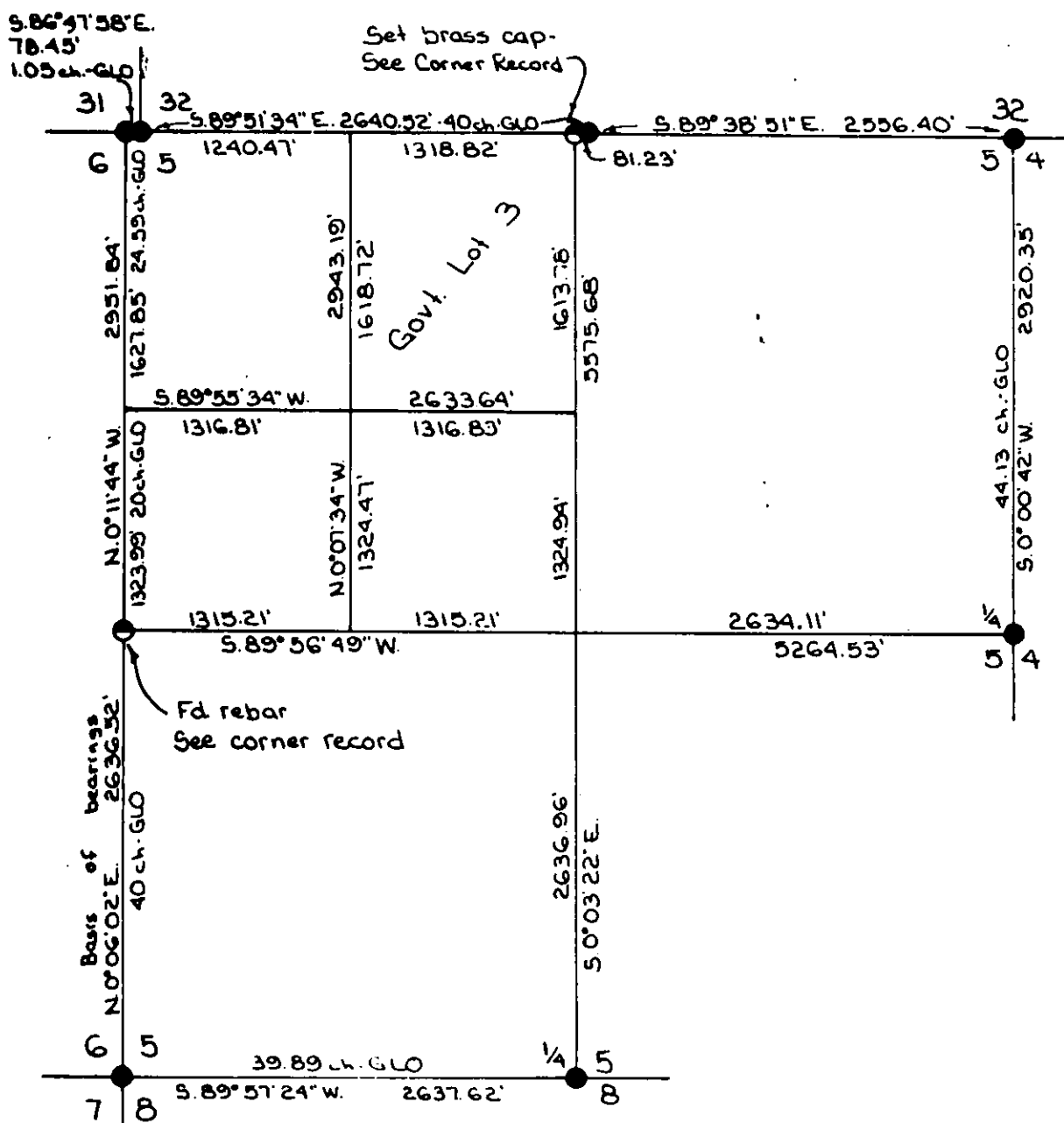
INSTRUCTIONS

1. Original and/or subse record used to evaluate the corner position.
2. Description of evidence and, note discrepancies in the record, state method of establishing or obliterated corners.
3. Description of monument and accessories set to perpetuate the corner position.
4. Sketch or corner, show all pertinent data which can best be shown in a sketch example, corner marking, topography ties, position of accessories, etc.
5. Certification must be signed and sealed by Registered Land Surveyor in State of Montana.
6. Fill in Cross Index & Section Diagram at bottom of sheet.

CERTIFIED CORNER RECORDATION

Corner Sec. 5, 6, 7, 8 T. 35N R. 27W P.M.M. Lincoln County

Found BLM brass cap



SKETCH OF CORNER

CERTIFICATION

I, _____, certify the information shown herein is true and correct.

Signature Ground Party Chief

I, D.K. Marquardt

certify that this Corner Record correctly represents work performed by me or under my direction in compliance with the "Corner Recordation Act" (70-24101, et seq., M.D.A.)

D.K. Marquardt
Signature of Surveyor & Seal

Date: 12/11/81 Reg. No. 2989ES

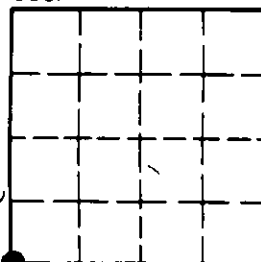
Employer: _____

Office of Clerk and Recorder, County of Lincoln. This "corner record" was filed for record on the February 8th day of 1982 was noted on the cross-index plat and is assigned page No. 1519, in book No. 1

Eleanor L. Vaughn by Betty L. Conces
County Official deputy

Cross Index No. E-5 T. 35N R. 27W P.M.M.

Sec. 5



• - corner this sheet