

CERTIFIED CORNER RECORDATION

Corner Cor. of Secs. 32 & 33 T. 36N R. 27W P.M.M. Lincoln County

1. 1893 original G.L.O. record by Peter McCardell & Abram L. Jaqueth:
Set stone and marked 4 bearing trees.

1904 G.L.O. resurvey record by Abraham L. Rinearson and Gordon C. Smith:
Reset stone and marked 4 bearing trees.

1911 G.L.O. resurvey record by Lewellyn D. Lyman and Royston C. Durnford:
Obliterate marks on two bearing trees, corner now refers to two sections only.

1969 B.L.M. remonumentation record by Roy G. Leedy:
The cor. of secs. 32 and 33, on the S. bdy. of the Tp., monumented with a limestone, 15x6x6 ins., firmly set, mkd. with 4 notches on the E. and 2 notches on the W. edges, and witnessed by the remains of the original bearing trees:
A stump, bears S44°E, 19 lks. dist., with no visible marks.
A snag, 14 ins. diam., bears N59°W, 27 lks. dist., with illegible mks.

at the corner point
Set an iron post, 30 ins. long, 2 1/2 ins. diam., 24 ins. in the ground with brass cap mkd. as shown.

from which
A fir, 9 ins. diam., bears N63 3/4°E, 6 lks. dist., mkd. T36N R27W S33 BT.
A fir, 7 ins. diam., bears N39 1/4°W, 8 lks. dist., mkd. T36N R27W S32 BT.
Bury the original stone alongside the iron post.

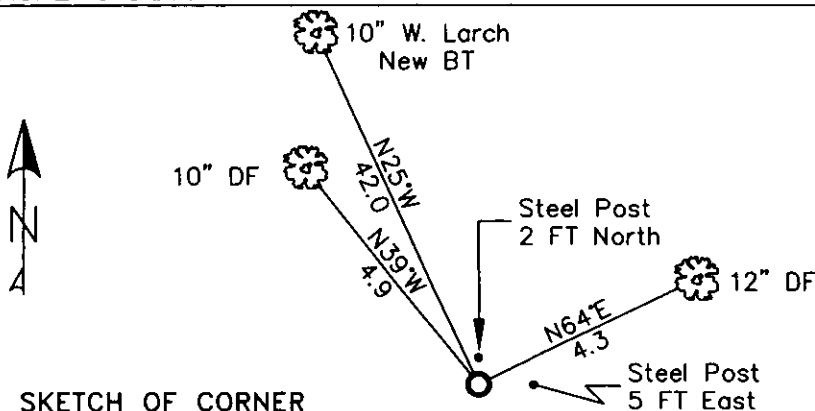
1999 Certified Corner Recordation by Ronald A. Pearson, MT Reg. No. 9008LS:
Found a 2 1/2 ins. diam. iron pipe 7 ins. out of ground with 3 1/4 ins. diam. BLM brass cap marked as shown,

from which
A fir, 9 ins. diam., bears N64°E, 4.2 ft. (6 lks.) dist., with visible scribe marks.
A rotten fir stump, 7 ins. diam. bears S44°E, 12.9 ft. (19 lks.) dist., chop marks.
A rotten fir snag, bears N59°W, 17.3 ft. (26 lks.) dist., chop marks.
A fir, 8 ins. diam., bears N39°W, 4.9 ft. (7 lks.) dist., with visible scribe marks.
Painted red bands around the bearing trees and attached Land Survey Monument and Bearing Tree signs.

2. Found 3 1/4 ins. BLM brass cap on 2 ins. iron pipe stamped as shown.
A 12 ins. douglas fir bears N64°E, 4.3 ft. healed blaze.
A 10 ins. douglas fir bears N39°W, 4.9 ft. visible scribe.
Steel post with Property Boundary and Land Survey Monument sign North 2.0 ft.

3. Painted rings and blazes on all BT's, replaced tags as needed, cleared brush, replaced BT in Sec. 32 with:
A 10 ins. western larch bears N25°W, 41.96 ft, scribed T36N R27W S32 BT.
A steel post East 5.0 ft. with Property Boundary and Land Survey Monument sign.

MAGNETIC DECLINATION - 16° EAST



CERTIFICATION

I, ERICH SCHRACK
certify the information shown on this record is true and correct.

LAWRENCE A. GLAHE
certify that this Corner Record was performed by me or under my direct supervision in compliance with the "Corner Restoration Act" (MCA 19-2-101 et seq., M.C.A.)

Date: 1-25-16 9748 LS
Employer: GLAHE & ASSOCIATES, INC.

9748 LS

Office of Clerk and Recorder, County of Lincoln. This "corner

record" was filed for record o 224090 BOOK: CCR CC&R'S PAGE: 11342 Pages: 1

was noted on the cross-index: STATE OF MONTANA LINCOLN COUNTY
RECORDED: 01/27/2010 12:12 KOI: CC&R'S

book No. TAMMY D. LAUER CLERK AND RECORDER

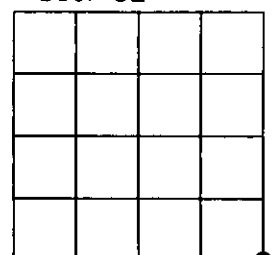
FEE: \$0.00

TO: FILED

Cross Index No. Z-9 T. 36N R. 27W PMM

Adopted July 1, 1981, Montana Board of Professional Engineers & Land Surveyors

Sec. 32



● corner this sheet