

CERTIFIED CORNER RECORDATION

Corner CC S5|S4 T. 35N R. 27W P.M.M. Lincoln County

1. 1893 Original Survey of the West and South Boundaries of T36N. R26. 27W. by Peter M. Cardell and Abram L. Jaqueth: Set a stone and four bearing trees.

1893 Subdivision and Meanders of T36N. R27W by Peter M. Cardell and Abram L. Jaqueth: Sites 1893 stone.

1911 Restablishment of the Fractional South Boundary of T36N. R27W. by Abraham L. Rinearson and Gordon C. Smith: Sites the 1893 stone.

1911 Subdivision and meanders of T35N. R27W. by Lewellyn D. Lyman and Royston C. Durnford: Intersect the N. bdy of the Tp. 125 lks. W. of the cor. of secs. 4, 5, 32 and 33. Hereinafter this will be known as the cor. of secs. 32 and 33 only. At the intersection, set a limestone and 2 BT's.

1969 BLM Remonumentation by Roy G. Leedy: The closing cor. of secs. 4 and 5, on the N. bdy. of the Tp., monumented with a limestone, 12x12x5 ins., firmly set, mkd. with 2 notches on the W. edge, CC on the S. face, and witnessed by the remains of the original bearing tree.

A stump, 12 ins. diam. bears S33 1/4°E, 238 lks., dist., with butt of log mkd. S4 B lying alongside.

At the corner point, set an iron post, 30 ins. long, 2 1/2 ins. diam., 24 ins. in the ground, with brass cap mkd. as shown

from which:

A larch, 7 ins. diam., bears S75 3/4°E, 29 lks., dist., T35N R27W S4 CC BT.

A larch, 10 ins. diam., bears S63°W, 45 lks., dist., T35N R27W S5 CC BT.

Bury the original stone alongside the iron pipe.

1995 Certified Corner Recordation by Ronald A. Pearson. MT Reg. No. 9008LS: Found a 2 1/2 ins. diam. iron pipe, 7 ins. out of ground with a 3 1/4 in. diam. BLM brass cap marked as shown,

from which

A larch, 8 ins. diam. bears S73°E, 19.5 ft. (29 lks.) dist., visible scribe marks.

A fir, 11 ins. bears S63°W, 29.5 ft. (45 lks.) dist., visible scribe marks.

Painted red bands around the bearing trees. Attached Land survey Monument and Bearing Tree signs.

Magnetic Declination: 20° East.

2007 Certified Corner Recordation by Steven A. Boyer. MT Reg. No. 9750LS: Found a 2 1/2 ins. diam. iron pipe, 8 ins. above the ground with a 3 1/4 in. diam. BLM brass cap marked as shown,

from which

A larch snag, 6 ins. diam. bears S73°E, 19.5 ft. dist., visible scribe marks.

A fir, 10 ins. diam., bears S69°W, 29.5 ft. dist., visible scribe marks.

Established 1 new bearing tree: A fir, 10 ins. diam. bears S65°E, 22.8 ft. dist., mkd. T35N R27W CC S4 BT.

Painted red the scribed faces and 6 in. bands on the bearing trees. Attached Land Survey Monument and Bearing Tree signs.

2. Found 3 1/4 ins. BLM brass cap on 2 ins. IP stamped as shown.

A larch snag bears S73°E, 19.5 ft., visible scribe.

A 12 ins. douglas fir bears S65°E, 22.8 ft., visible scribe.

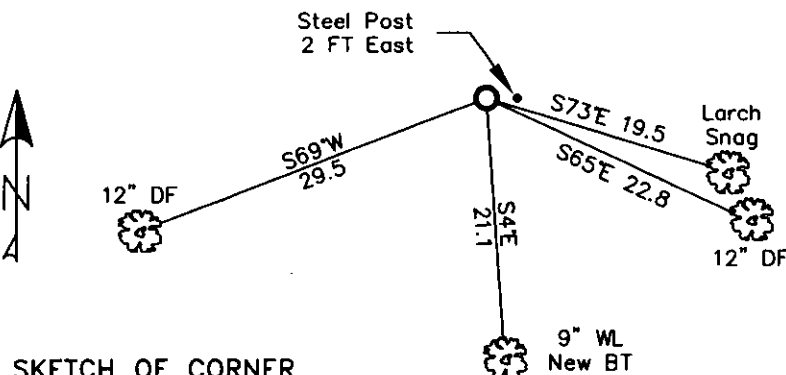
A 12 ins. douglas fir bears S69°W, 29.5 ft., visible scribe.

A steel post East 2.0 ft., with PB sign.

3. Cleared brush, repainted rings and blazes around BT's, replaced tags, replaced BT in section 4:
Established: A 9 ins. western larch bears S4°E, 21.1 ft. scribed T35N R27W S4 BT.

MAGNETIC DECLINATION- 16° EAST

T36N R27W
S32
S5|S4
T35N R27W
CC
1969



SKETCH OF CORNER

CERTIFICATION

I, ERICH SCHRACK
certify the information presented is true and correct.

LAWRENCE A. GLAHE
I, LAWRENCE A. GLAHE
certify that this Corner Record correctly represents work
performed by me or under my direct supervision in compliance with
the "Corner Restoration Act" (20-32-101, et seq., M.C.A.)

Date: 1-25-10 No. 9748 LS
Employer: GLAHE & ASSOCIATES

Office of Clerk and Recorder, County of Lincoln. This "corner

record" was filed for record o 224089 BOOK: CCR CC&R'S PAGE: 11341 Pages: 1
was noted on the cross-index: STATE OF MONTANA LINCOLN COUNTY
book No. TAMMY D. LAUER CLERK AND RECORDER
FEE: \$0.00 BY Francis Dennis
TO: FILED

Cross Index No. A-9 T. 35N R. 27W PMM

Adopted July 1, 1981, Montana Board of Professional Engineers & Land Surveyors

Sec. 5				

● corner this sheet