

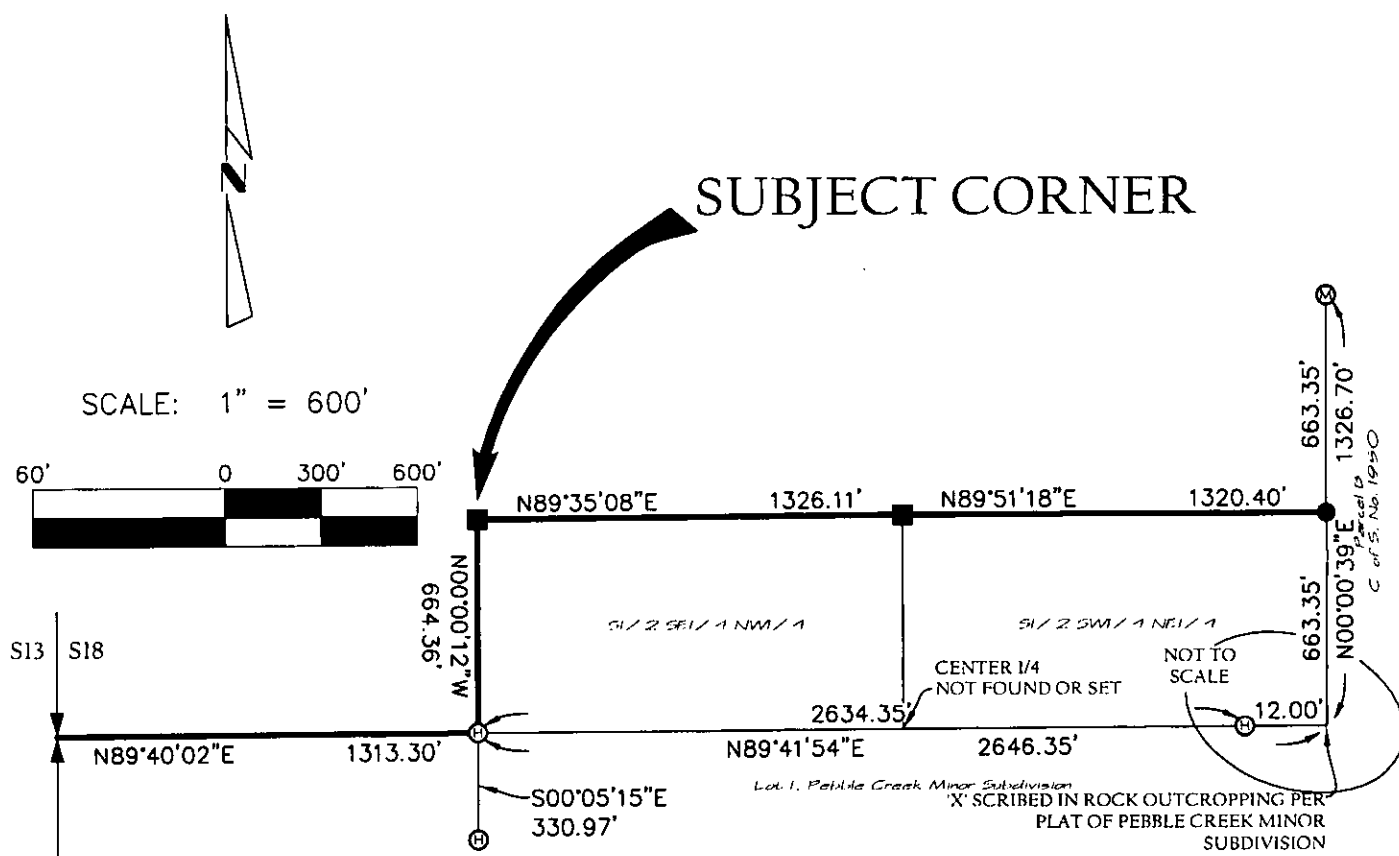
# CERTIFIED CORNER RECORDATION

Corner C-S-NW 1/64, SECTION 18 T. 35 N R. 27 W P.M.M. LINCOLN County

RECORD:  
NO RECORD OF THIS MONUMENT HAVING BEEN PREVIOUSLY SET.

FOUND:  
MONUMENTS AS SHOWN BELOW.

SET:  
5/8" BY 24" REBAR WITH PLASTIC CAP MARKED "MARQUARDT 73285" AT POSITION AS SHOWN BELOW.



## LEGEND

- FOUND 1/4 CORNER - BLM BRASS CAP
- FOUND 5/8" REBAR WITH PLASTIC CAP MARKED 'HUGHES 73225'
- FOUND 5/8" REBAR WITH PLASTIC CAP MARKED 'MARQUARDT 73285'
- SET 5/8" BY 24" REBAR WITH PLASTIC CAP MARKED 'MARQUARDT 73285' AT MID-POINT BETWEEN ADJACENT CONTROLLING CORNERS
- SET 5/8" BY 24" REBAR WITH PLASTIC CAP MARKED 'MARQUARDT 73285' AT POSITION CALCULATED PER FIELD TIES AND TIES SHOWN ON C. OF S. NO. 793 & PEBBLE CREEK MINOR SUBDIVISION

## SKETCH OF CORNER

CERTIFICATION	
I, <u>Brian Parnell</u>	certify the information shown herein is true and correct.
<u>Brian Parnell</u>	Signature of Surveyor
I, <u>Dawn Marquardt</u>	certify that this Corner Record correctly represents work performed by me or under my direction in accordance with the "Corner Recordation Act" (70-23-101, et seq. M.C.L.)
<u>Dawn Marquardt</u>	Signature of Surveyor
Date: <u>10/31/08</u>	Reg. No. <u>23285</u>
Employer: <u>Marquardt &amp; Marquardt Surveying, Inc.</u>	

Office of Clerk and Recorder, County of LINCOLN . This "corner

record" was filed for rec 215230 BOOK: CCR CC&R'S PAGE: 11280 Pages: 1

was noted on the cross-RECORDED: 11/03/2008 1:46 KOI: CC&R'S

Book No. TAMMY D. LAUER CLERK AND RECORDER FEE: \$0.00

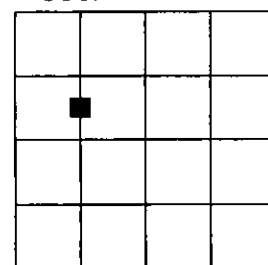
TO: FILED

BY: Debbie K. Knepper

Cross Index No. K/L-2 T. 35N R. 27W PMM

Adopted July 1, 1981, Montana Board of Professional Engineers & Land Surveyors

Sec. 18



corner this sheet