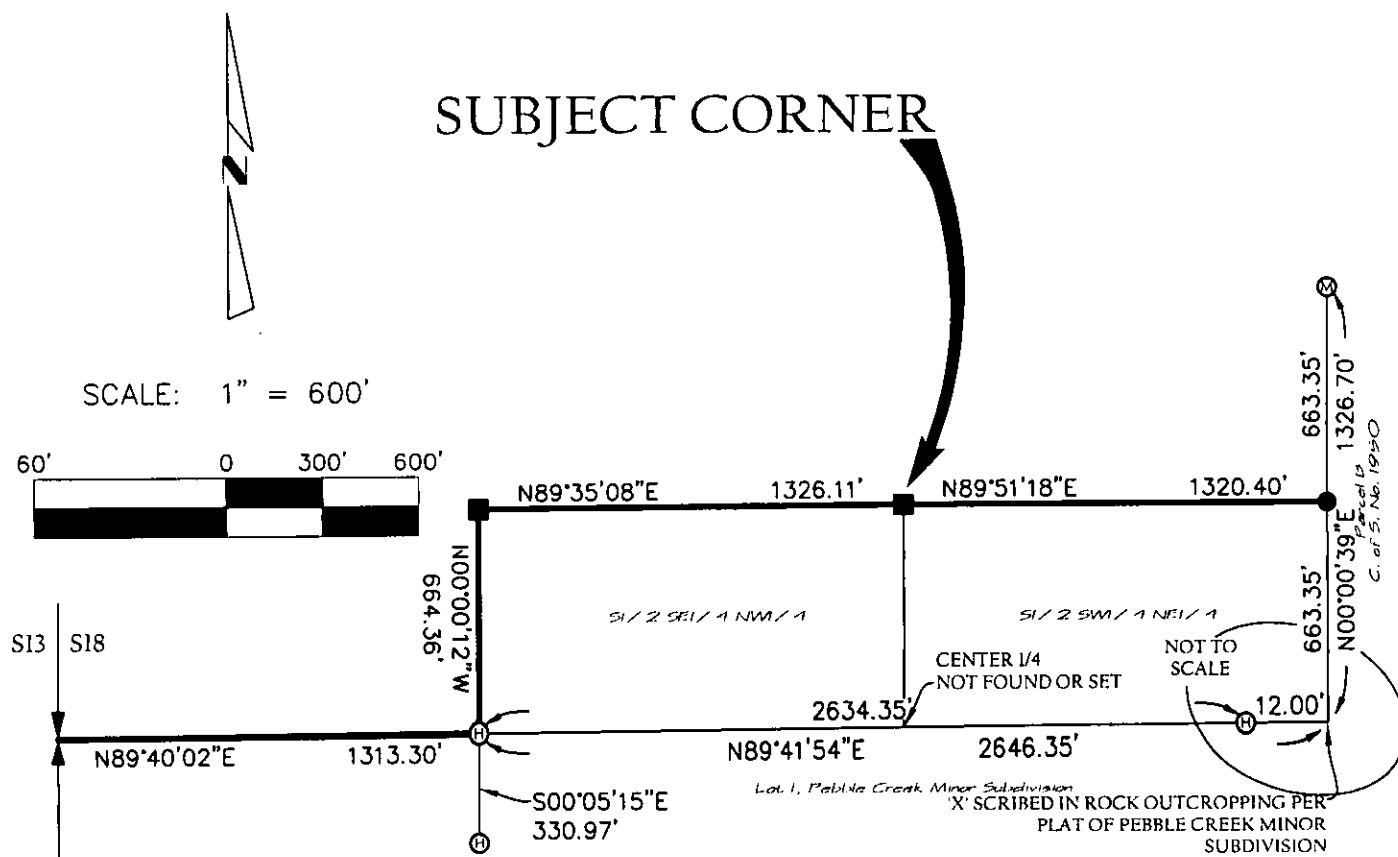


Corner C-S-N 1/64, SECTION 18 T. 35 N R. 27 W P.M.M. LINCOLN County

SET:
5/8" BY 24" REBAR WITH PLASTIC CAP MARKED "MARQUARDT 73285" AT POSITION AS SHOWN BELOW.



- FOUND 1/4 CORNER - BLM BRASS CAP
- FOUND 5/8" REBAR WITH PLASTIC CAP MARKED "HUGHES 73225"
- FOUND 5/8" REBAR WITH PLASTIC CAP MARKED "MARQUARDT 73285"
- SET 5/8" BY 24" REBAR WITH PLASTIC CAP MARKED "MARQUARDT 73285"
AT MID-POINT BETWEEN ADJACENT CONTROLLING CORNERS
- SET 5/8" BY 24" REBAR WITH PLASTIC CAP MARKED "MARQUARDT 73285"
AT POSITION CALCULATED PER FIELD TIES AND TIES SHOWN ON C. OF
S. NO. 793 & PEBBLE CREEK MINOR SUBDIVISION

CERTIFICATION

1. Brian Parnell
certify the information shown herein is true and correct.

Brian Parnell
Signature Groundwater Clerk

1. Dawn Marquardt
certify that this Corner Record correctly represents work performed by me or under my direction in compliance with the "Corner Recordation Act" (70-22-101, et seq. M.C.A.)

Dawn Marquardt
Signature of Surveyor & 54828 LS

Date: 10/31/02 Reg. No. 54828

Employer: Marquardt & Marquardt Surveying Inc.

MONTANA
DAWN
MARQUARDT
REGISTERED
SURVEYOR
NOV 1 AND 5

Office of Clerk and Recorder, County of LINCOLN. This "corner

215229 BOOK: CCR CC&R'S PAGE: 11279 Pages: 1

STATE OF MONTANA LINCOLN COUNTY

RECORDED: 11/03/2008 1:45 KOI: CCR'S

TAMMY D. LA

BY: Flannie Turner

TO: FILED

Cross Index No. K/L - 3 T. 35N R. 27W PMM

Adopted July 1, 1981, Montana Board of Professional Engineers & Land Surveyors

Sec. 18

| | | | |
|--|--|---|--|
| | | | |
| | | ■ | |
| | | | |
| | | | |

■ corner this sheet