

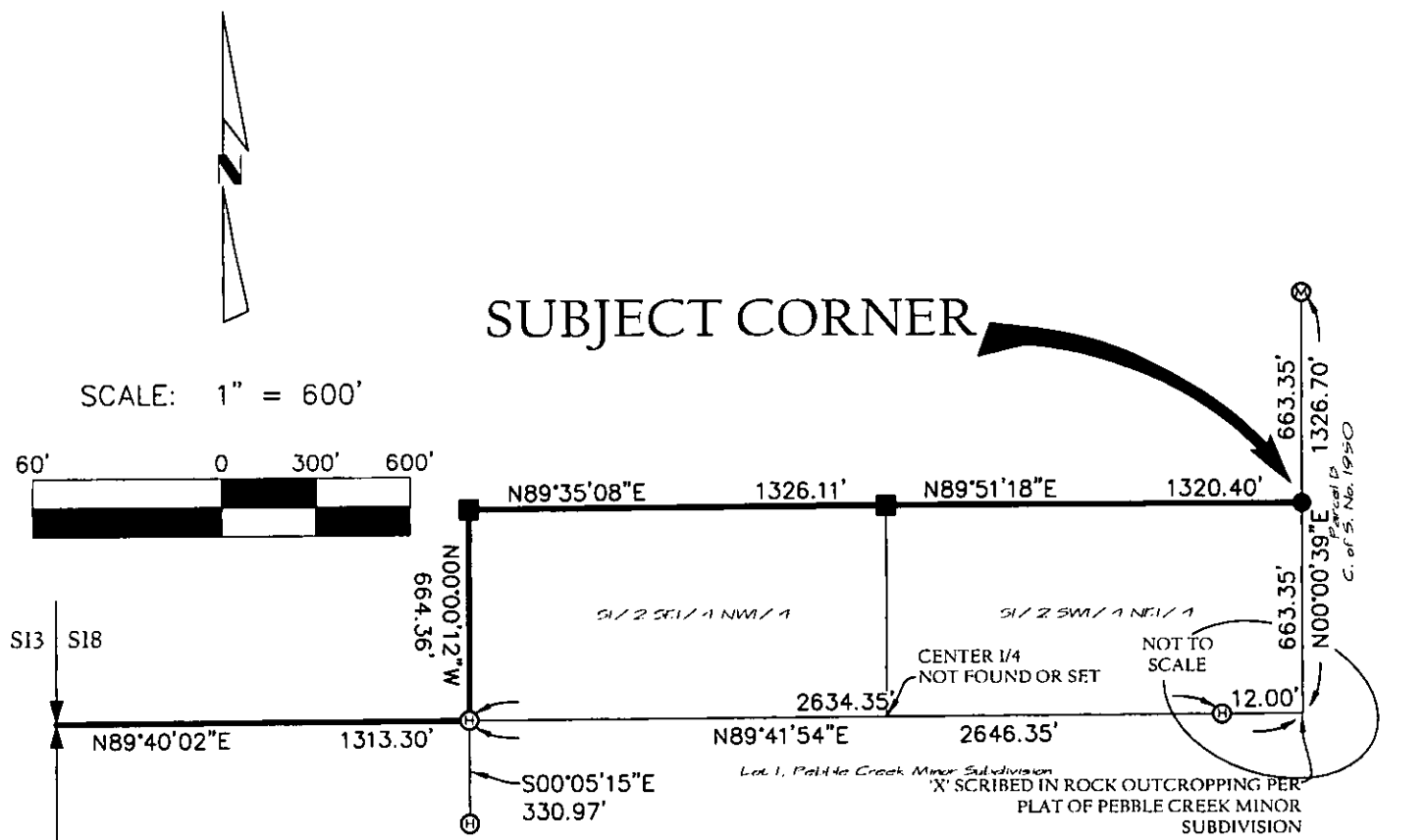
# CERTIFIED CORNER RECORDATION

Corner C-5-NE 1/64, SECTION 18 T. 35 N R. 27 W P.M.M. LINCOLN County

RECORD:  
NO RECORD OF THIS MONUMENT HAVING BEEN PREVIOUSLY SET.

FOUND:  
MONUMENTS AS SHOWN BELOW.

SET:  
5/8" BY 24" REBAR WITH PLASTIC CAP MARKED "MARQUARDT 73285" AT POSITION AS SHOWN BELOW.



## LEGEND

- FOUND 1/4 CORNER - BLM BRASS CAP
- FOUND 5/8" REBAR WITH PLASTIC CAP MARKED 'HUGHES 73225'
- FOUND 5/8" REBAR WITH PLASTIC CAP MARKED 'MARQUARDT 73285'
- SET 5/8" BY 24" REBAR WITH PLASTIC CAP MARKED 'MARQUARDT 73285' AT MID-POINT BETWEEN ADJACENT CONTROLLING CORNERS
- SET 5/8" BY 24" REBAR WITH PLASTIC CAP MARKED 'MARQUARDT 73285' AT POSITION CALCULATED PER FIELD TIES AND TIES SHOWN ON C. OF S. NO. 793 & PEBBLE CREEK MINOR SUBDIVISION

## SKETCH OF CORNER

CERTIFICATION	
1. Brian Parnell	certify the information shown herein is true and correct.
	Signature of Surveyor & Clerk
1. Dawn Marquardt	certify that this Corner Record correctly represents work performed by me or under my direction in compliance with the "Corner Recordation Act" (70-22-104 M.C.A.)
	Signature of Surveyor & Seal
Date: 11/31/08	Reg. No. 10000
Employer: Marquardt & Marquardt Surveying Inc.	

Office of Clerk and Recorder, County of LINCOLN . This "corner

record" was filed for record

was noted on the cross-index

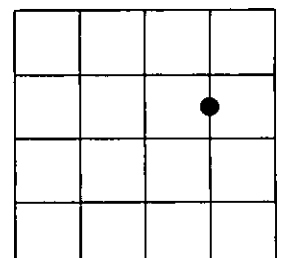
Book No. \_\_\_\_\_

215227 BOOK: CCR CC&R'S PAGE: 11278 Pages: 1  
STATE OF MONTANA LINCOLN COUNTY  
RECORDED: 11/03/2008 1:30 KOI: CC&R'S  
TAMMY D. LAUER CLERK AND RECORDER  
FEE: \$0.00  
TO: FILED

Cross Index No. K/L - 4 T. 35N R. 27W PMM

Adopted July 1, 1981, Montana Board of Professional Engineers & Land Surveyors

Sec. 18



● corner this sheet