

# CERTIFIED CORNER RECORDATION

Corner North 1/4 Sec. 4 T. 35 N. R. 27 W. P.M.M. LINCOLN County

- I. Record: None set; 1893, Original Township Boundary Lines, set 1/4 corner common to Sec. 33, T.36N., R27W. by Peter McCardell and Abram L. Jaqueth. 1913 Survey of the Subdivision and Meanders of T.35N., R.27W. by Lewellyn D. Lyman and Royston G. Durnford: Set Closing Corners on North boundary of section.
- II. Found: None; A 1/4 stone, on the north boundary common to Sec. 33 T.36N., R.27W. and the Closing Corner of Secs. 4 and 5, T.35N., R.27W. were found.
- III. Perpetuation: at calculated proportional position, set a 2 1/2 ins. diam. x 30 ins. aluminum pipe, 6 ins. out of ground with 3 1/4 ins. diam. aluminum cap marked as shown:



From which:

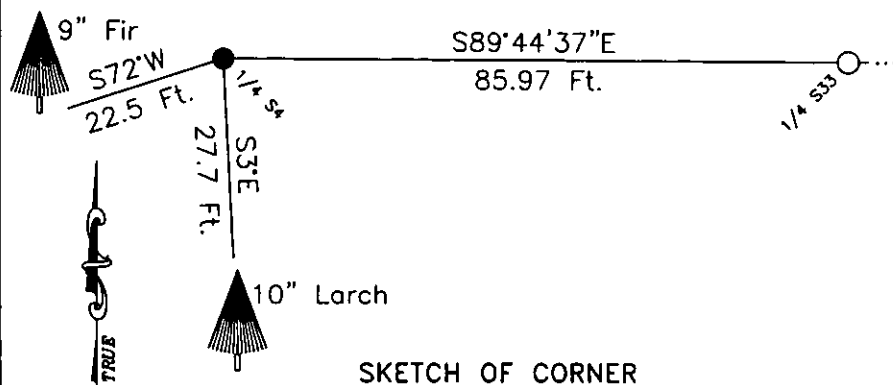
A larch, 10 ins. diam., bears S3'E, 27.7 ft. dist., marked 1/4 S4 BT.  
A douglas fir, 9 ins. diam., bears S72'W, 22.5 ft. dist., marked X-BT.

Attached Bearing Tree signs and painted a 1 ft. red band around each tree.  
Raise a small mound of stone around pipe monument.

Magnetic declination: 20' East assumed

Equipment used: Hand compass and loggers tape

Kootenai Surveyors Inc., 314 California Av., Libby, MT. 59923 (406) 293-4354



## CERTIFICATION

I, Gary C. Crismon  
certify the information shown herein is true and correct.

Gary C. Crismon  
Signature Ground Party Chief

I, Alvah F. Hughes  
certify that this Corner Record correctly represents work performed by me or under my direction in compliance with the "Corner Recordation Act" (70-22-101 et seq., M.C.A.)

Alvah F. Hughes  
Signature of Surveyor & Seal

Date: 02/20/03 Reg. No. 7322-LS

Employer: Kootenai Surveyors Inc.

Office of Clerk and Recorder, County of Lincoln This "corner

record" was filed for record on March 12, 2003

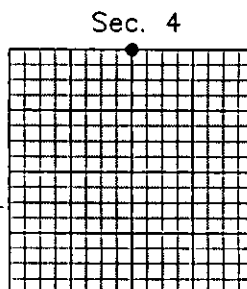
was noted on the cross-index plat and is assigned page No. 10605, in  
book No. Coal on Comm

County Official

Doc # 166046

Cross Index No. A-11 T. 35N. R. 27W. P.M., MT

Adopted July 1, 1981, Montana Board of Professional Engineers & Land Surveyors



• corner this sheet