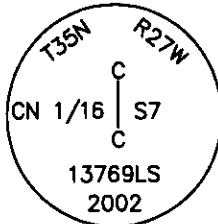


CERTIFIED CORNER RECORDATION

Corner CN1/16 Sec. 7 T. 35 N. R. 27 W. P.M.M. LINCOLN County

- I. Record: No previous record.
- II. No evidence found.
- III. At the position determined by survey, set a $\frac{5}{8}$ in. diam. rebar, 24 ins. long, 22 ins. in the ground, with a $3 \frac{1}{4}$ in. diam. aluminum cap marked as shown.



From which the new bearing trees:

- A larch, 18 ins. diam., S2°E, 54.8 ft., marked CN 1/16 S7 BT.
- A fir, 8 ins. diam., N52°W, 10.4 ft., marked CN 1/16 S7 BT.

Set a 6 ft. galvanized steel guard post 3.0 ft. north and east, with Property Boundary and Land Survey Monument decals attached. Attached Bearing Tree and Land Survey Monument signs to the bearing trees. Painted red bands around the bearing trees.

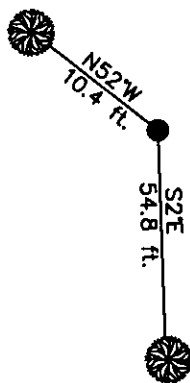
Date of Fieldwork: 8/13/2002

Survey crew: Steve Boyer, Tom Hommel

Magnetic declination: 20° East assumed

Equipment used: Hand compass and loggers tape

U.S. Forest Service, Supervisors Office, 1101 Hwy. 2 West, Libby, MT 59923 (406) 293-6211



SKETCH OF CORNER

NOT TO SCALE

CERTIFICATION

I, Steven A. Boyer 9759LS
certify the information shown herein is true and correct.

Steven A. Boyer
Signature of Surveyor

I, Roger O. Green GREEN
certify that this Corner Record accurately represents work performed by me or under my direction in compliance with the "Corner Recordation Act" (70-22-101, Montana Code Annotated).

Roger O. Green
Signature of Surveyor & Surveyor

Date: 08/13/2002 Reg. No. 13769LS

Employer: U. S. Forest Service

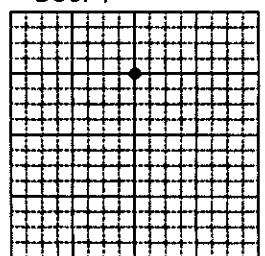
Office of Clerk and Recorder, County of Lincoln This "corner

record" was filed for record on Jan. 30, 2003

was noted on the cross-index plot and is assigned page No. 10584, in

book No. Coral M. Cummings By RB
County Official

Sec. 7



• corner this sheet

Cross Index No. F-03 T. 35N. R. 27W. P.M., MT

Adopted July 1, 1981, Montana Board of Professional Engineers & Land Surveyors