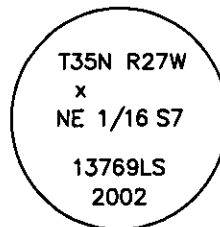


# CERTIFIED CORNER RECORDATION

Corner NE1/16 Sec. 7 T. 35 N. R. 27 W. P.M.M. LINCOLN County

- I. Record: 2002 Certificate of Survey #3124 by Dawn Marquardt, Reg. No. 7328S, subdivides the NE 1/4 of section 7 and creates three new parcels. The position for the NE 1/16 was established and monumented with a 5/8 in. diam. x 24 ins. long rebar with a yellow plastic cap stamped "MARQUARDT 7328S".
- II. Found a 5/8 in. diam. rebar with a yellow plastic cap marked "MARQUARDT 7328S"
- III. Accepted the Marquardt rebar as the true position for the NE 1/16. Replaced the yellow plastic cap with a 3 1/4 in. diam. aluminum cap marked as shown.

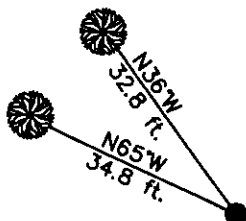


From which the new bearing trees:

- A fir, 9 ins. diam., S15°W, 24.2 ft., marked NE 1/16 S7 BT.
- A fir, 6 ins. diam., S70°W, 23.6 ft., marked NE 1/16 S7 BT.

Set a 6 ft. galvanized steel guard post 3.0 ft. south and west, with Property Boundary and Land Survey Monument decals attached. Attached Bearing Tree and Land Survey Monument signs to the bearing trees. Painted red bands around the bearing trees.

Date of Fieldwork: 8/12/2002  
 Survey crew: Steve Boyer, Tom Hommel  
 Magnetic declination: 20° East assumed  
 Equipment used: Hand compass and loggers tape  
 U.S. Forest Service, Supervisors Office, 1101 Hwy. 2 West, Libby, MT 59923 (406) 293-6211



SKETCH OF CORNER

NOT TO SCALE

**CERTIFICATION**

I, Steven A. Boyer 8750LSA  
 certify the information shown herein is true and correct.

*Steven A. Boyer*  
 Signature of Surveyor

I, Roger O. Green GREEN  
 certify that this Corner Record correctly represents work performed by me or under my direction in compliance with the "Corner Recordation Act" (70-22-101, et seq., M.C.A.)

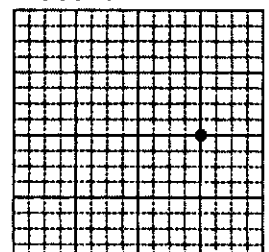
*Roger O. Green*  
 Signature of Surveyor

Date: 08/12/2002 Reg. No. 13769LS  
 Employer: U. S. Forest Service

Office of Clerk and Recorder, County of Lincoln This "corner record" was filed for record on Jan 30, 2003 was noted on the cross-index plat and is assigned page No. 10583 in book No. Corral M. Cummings By RB

County Official

Sec. 7



• corner this sheet

Cross Index No. F-04 T. 35N. R. 27W. P.M., MT

Adopted July 1, 1981, Montana Board of Professional Engineers & Land Surveyors