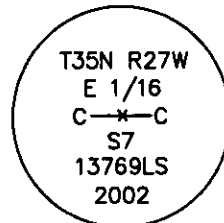


# CERTIFIED CORNER RECORDATION

Corner CE1/16 Sec. 7 T. 35 N. R. 27 W. P.M.M. LINCOLN County

- I. Record: 2002 Certificate of Survey #3124 by Dawn Marquardt, Reg. No. 7328S, subdivides the NE 1/4 of section 7 and creates three new parcels. The position for the CE 1/16 was established and monumented with a 5/8 in. diam. x 24 ins. long rebar with a yellow plastic cap stamped "MARQUARDT 7328S".
- II. Found a 5/8 in. diam. rebar with a yellow plastic cap marked "MARQUARDT 7328S"
- III. Accepted the Marquardt rebar as the true position for the CE 1/16. Replaced the yellow plastic cap with a 3 1/4 in. diam. aluminum cap marked as shown.

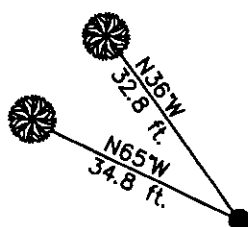


From which the new bearing trees:

- A fir, 7 ins. diam., N65°W, 34.8 ft., marked CE 1/16 S7 BT.
- A spruce, 11 ins. diam., N36°W, 32.8 ft., marked CE 1/16 S7 BT.

Set a 6 ft. galvanized steel guard post 3.0 ft. north and west, with Property Boundary and Land Survey Monument decals attached. Attached Bearing Tree and Land Survey Monument signs to the bearing trees. Painted red bands around the bearing trees.

Date of Fieldwork: 8/12/2002  
 Survey crew: Steve Boyer, Tom Hommel  
 Magnetic declination: 20° East assumed  
 Equipment used: Hand compass and loggers tape  
 U.S. Forest Service, Supervisors Office, 1101 Hwy. 2 West, Libby, MT 59923 (406) 293-6211



NOT TO SCALE

SKETCH OF CORNER

CERTIFICATION

I, Steven A. Boyer, 97501 SAN  
 certify the information shown herein is true and correct.

Signature of Ground Party

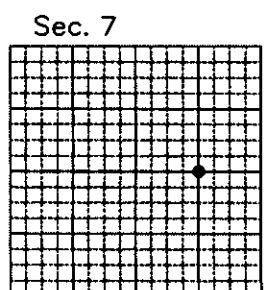
I, Roger O. Green, 13769LS  
 certify that this Corner Record correctly represents work performed by me or under my direction in compliance with the "Corner Recordation Act" 22-151, MCA, 1972.

Signature of Surveyor & Seal

Date: 08/12/2002 Reg. No. 13769LS  
 Employer: U. S. Forest Service

Office of Clerk and Recorder, County of Lincoln This "corner  
 record" was filed for record on Jan. 30, 2003  
 was noted on the cross-index plat and is assigned page No. 10581, in  
 book No. Coral M. Cumming By RB

County Official



• corner, this sheet

Cross Index No. G-04 T. 35N. R. 27W. P.M., MT

Adopted July 1, 1981, Montana Board of Professional Engineers & Land Surveyors