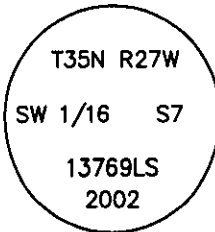


CERTIFIED CORNER RECORDATION

Corner SW 1/16 Sec. 7 T. 35 N. R. 27 W. P.M.M. LINCOLN County

- I. Record: No previous record.
- II. No evidence found.
- III. At the position determined by survey, set a 5/8 in. diam. X 24 ins. long rebar, 22 ins. in the ground with a 3 1/4 in. diam. aluminum cap marked as shown.

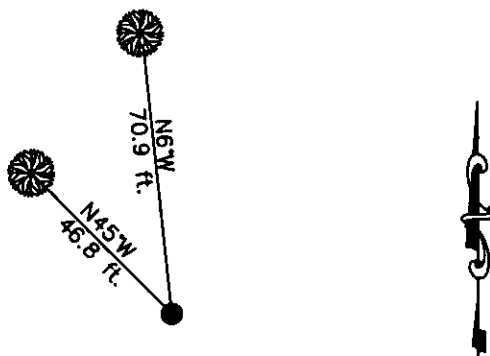


From which the new bearing trees:

- A larch, 16 ins. diam., N21°W, 9.5 ft., marked SW 1/16 S7 BT.
- A fir, 24 ins. diam., N45°W, 13.9 ft., marked SW 1/16 S7 BT.

Set a 6 ft. galvanized steel guard post 3.0 ft. south and east, with Property Boundary and Land Survey Monument decals attached. Attached Bearing Tree and Land Survey Monument signs to the bearing trees. Painted red bands around the bearing trees.

Date of Fieldwork: 7/31/2002
Survey crew: Steve Boyer, Tom Hommel
Magnetic declination: 20° East assumed
Equipment used: Hand compass and loggers tape
U.S. Forest Service, Supervisors Office, 1101 Hwy. 2 West, Libby, MT 59923 (406) 293-6211



SKETCH OF CORNER

NOT TO SCALE

CERTIFICATION

I, Steven A. Boyer 9750LS
certify the information shown herein is true and correct.

[Signature]
Signature Ground Party Chief

I, Roger O. Green
certify that this Corner Record correctly represents work performed by me or under my direction in accordance with the Corner Recordation Act, 1982-101, et seq., M.C.A.

[Signature]
Signature of Surveyor

Date: 07/31/2002 Reg. No. 13769LS
Employer: U. S. Forest Service

ROGER O. GREEN
LICENSED SURVEYOR

Office of Clerk and Recorder, County of Lincoln This "corner

record" was filed for record on Jan 30, 2003

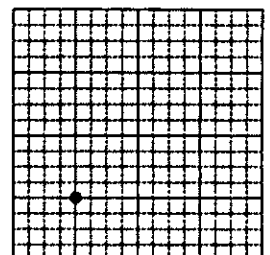
was noted on the cross-index plat and is assigned page No. 10530, in
book No. Coral M. Cumming by RB

County Official

Cross Index No. H-02 T. 35N. R. 27W. P.M., MT

Adopted July 1, 1981, Montana Board of Professional Engineers & Land Surveyors

Sec. 7



• corner this sheet