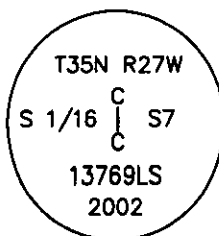


CERTIFIED CORNER RECORDATION

Corner CS 1/16 Sec. 7 T. 35 N. R. 27 W. P.M.M. LINCOLN County

- I. Record: 1975 Certificate of Survey #104 by J. W. Ninneman subdivides the SE 1/4 of Section 7 and creates two new parcels in the N 1/2 SW 1/4 SE 1/4 Section 7. Monuments set this survey are "1/2" steel rods, 24" long capped with poly-vinal chloride caps stamped JN 534ES".
- II. Found a 1/2" rebar with poly-vinal chloride cap marked JHN 534ES..
- III. The found Ninneman rebar was not accepted as the true position for the CS 1/16 Section 7 due to a large positional tolerance discrepancy. At the position determined by survey, set a 5/8 in. diam. X 24 ins. long rebar, flush with the ground with a 3 1/4 in. diam. aluminum cap marked as shown.

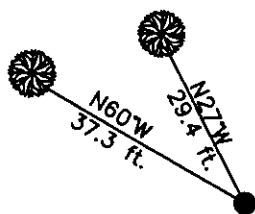


From which the new bearing trees:

A fir, 16 ins. diam., N60°W, 37.3 ft., marked CS 1/16 S7 BT.
 A fir, 9 ins. diam., N27°W, 29.4 ft., marked CS 1/16 S7 BT.
 JHN rebar bears, N0°59'E, 5.67 ft.

Set a 6 ft. galvanized steel guard post 3.0 ft. north and west, with Property Boundary and Land Survey Monument decals attached. Attached Bearing Tree and Land Survey Monument signs to the bearing trees. Painted red bands around the bearing trees.

Date of Fieldwork: 8/1/2002
 Survey crew: Steve Boyer, Tom Hommel
 Magnetic declination: 20° East assumed
 Equipment used: Hand compass and loggers tape
 U.S. Forest Service, Supervisors Office, 1101 Hwy. 2 West, Libby, MT 59923 (406) 293-6211



NOT TO SCALE

SKETCH OF CORNER

CERTIFICATION

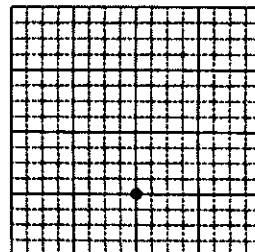
I, Steven A. Boyer 9758 MT
 certify the information shown herein is true and correct.
 Signature of Land Surveyor STEVEN A. BOYER
 I, Roger O. Green GREEN
 certify that this Corner Record correctly represents work performed by me or under my direction in compliance with the "Corner Recordation Act" (20-22-01) MCA.
 Signature of Surveyor ROGER O. GREEN

Date: 08/1/2002 Reg. No. 13769LS
 Employer: U. S. Forest Service

Office of Clerk and Recorder, County of Lincoln This "corner record" was filed for record on Jan 30, 2003 was noted on the cross-index plat and is assigned page No. 10579 in book No. Coral M. Cummings By ROB

County Official

Sec. 7



• corner this sheet

Cross Index No. H-03 T. 35N. R. 27W. P.M., MT

Adopted July 1, 1981, Montana Board of Professional Engineers & Land Surveyors