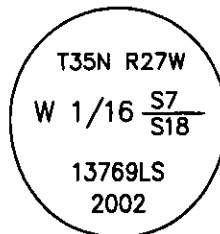


CERTIFIED CORNER RECORDATION

Corner W 1/16 Secs. 7 & 18 T. 35 N. R. 27 W. P.M.M. LINCOLN County

- I. Record: No previous record.
- II. No evidence found.
- III. At the position determined by survey, set a 5/8 in. diam. X 24 ins. long rebar, 22 ins. in the ground with a 3 1/4 in. diam. aluminum cap marked as shown.

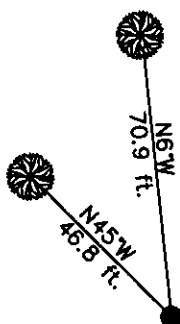


From which the new bearing trees:

- A fir, 11 ins. diam., N6°W, 70.9 ft., marked W 1/16 S7 BT.
- A fir, 11 ins. diam., N45°W, 46.8 ft., marked W 1/16 S7 BT.

Set a 6 ft. galvanized steel guard post 3.0 ft. north and west, with Property Boundary and Land Survey Monument decals attached. Attached Bearing Tree and Land Survey Monument signs to the bearing trees. Painted red bands around the bearing trees.

Date of Fieldwork: 7/31/2002
 Survey crew: Steve Boyer, Tom Hommel
 Magnetic declination: 20° East assumed
 Equipment used: Hand compass and loggers tape
 U.S. Forest Service, Supervisors Office, 1101 Hwy. 2 West, Libby, MT 59923 (406) 293-6211



SKETCH OF CORNER

NOT TO SCALE

CERTIFICATION

I, Steven A. Boyer 9750LS
 certify the information shown herein is true and correct.

Roger O. Green
 Signature of Surveyor

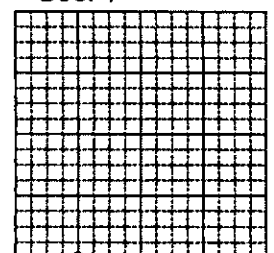
I, Roger O. Green
 certify that this Corner Record correctly represents work performed by me or under my direction in compliance with the "Corner Recordation Act" 170-22-101, et seq., M.C.A.

Roger O. Green
 Signature of Surveyor

Date: 07/31/2002 Reg. No. 13769LS
 Employer: U. S. Forest Service

Office of Clerk and Recorder, County of Lincoln This "corner record" was filed for record on Jan 30, 2003 was noted on the cross-index plat and is assigned page No. 10578 in book No. Coral M. Cunningham By Deb
 County Official

Sec. 7



• corner this sheet

Cross Index No. J-02 T. 35N. R. 27W. P.M., MT