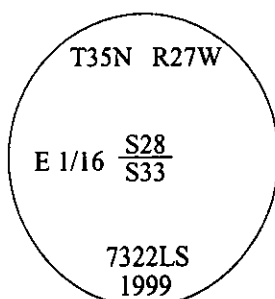


-CERTIFIED CORNER RECORDATION

Corner E 1/16 Secs. 28&33 T. 35N R. 27W P.M., MT Lincoln County

- I. No previous history.
- II. No evidence found.
- III. Set by survey, a 3/4 in. diam. aluminum rod, 30 ins. long, 27 ins. in the ground, with a 3 1/4 in. diam. aluminum cap, mkd. as shown.

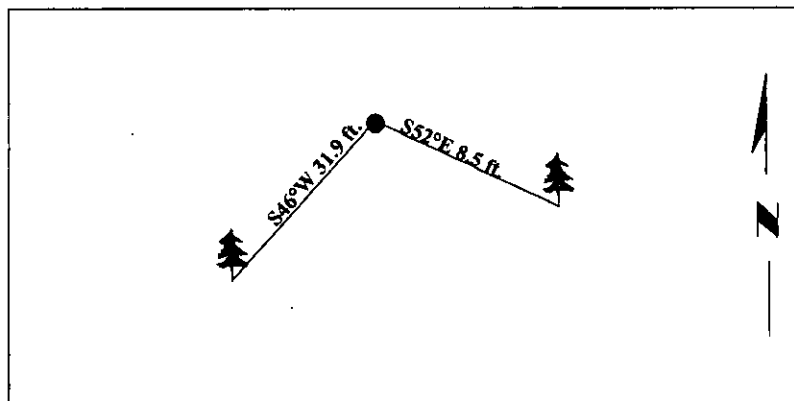


Established two bearing trees:

- A larch, 9 ins. diam., bears S52°E, 8.5 ft. dist., mkd. "E 1/16 S33 BT".
- A spruce, 9 ins. diam., bears S46°W, 31.9 ft. dist., mkd. "E 1/16 S33 BT".

Painted bearing trees and attached Land Survey Monument and Bearing Tree signs.

Magnetic Declination: 20° East



SKETCH OF CORNER

CERTIFICATION

I, Steven A. Boyer
certify the information shown herein is true and correct.

I, Alvah F. Hughes
certify that this Corner Record correctly represents work performed by me or under my direction in compliance with the Corner Recordation Act (79-22-101, et seq., M.C.A.)

Alvah F. Hughes
Signature of Surveyor & Seal

Date: 4/22/99

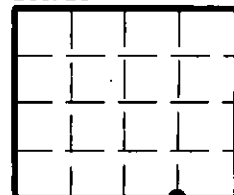
Reg. No.: 7322LS

Employer: U.S. FOREST SERVICE

Professional Land Surveyor

Office of Clerk and Recorder, County of Lincoln. This "corner record" was filed for record on May 4, 1999 and was noted on the cross-index plat and is assigned page No. —, in book No. 10338 Carol M. Cummins By Deb
County Official

Sec. 28



● - corner this sheet