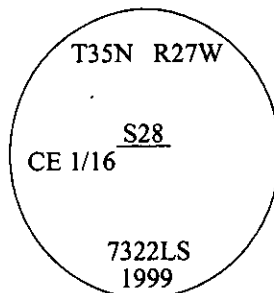


# -CERTIFIED CORNER RECORDATION

Corner CE1/16 Sec. 28 T. 35N R. 27W P.M., MT Lincoln County

- I. No previous history.
- II. No evidence found.
- III. Set by survey, a 3/4 in. diam. aluminum rod, 30 ins. long, 27 ins. in the ground, with a 3 1/4 in. diam. aluminum cap, mkd. as shown.

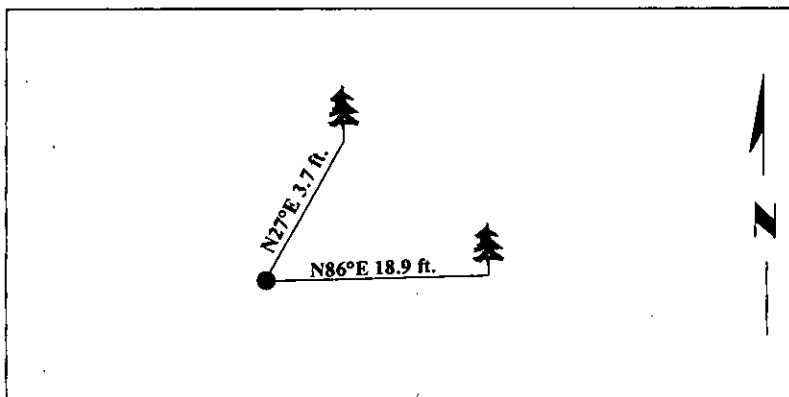


Established two bearing trees:

- A fir, 9 ins. diam., bears N27°E, 3.7 ft. dist., mkd. "CE 1/16 S28 BT".
- A larch, 13 ins. diam., bears N86°E, 18.9 ft. dist., mkd. "CE 1/16 S28 BT".

Painted bearing trees and attached Land Survey Monument and Bearing Tree signs.

Magnetic Declination: 20° East



SKETCH OF CORNER

CERTIFICATION

I, Steven A. Boyer  
certify the information shown herein is true and correct.

I, Alvah F. Hughes  
certify that this Corner Record correctly represents work performed by me or under my direction in compliance with the "Corner Recordation Act" (70-22-101, et seq., M.C.A.)

Alvah F. Hughes  
Signature of Surveyor & Seal

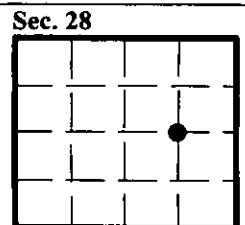
Date: 4/22/99

Reg. No.: 7322LS

Employer: U.S. FOREST SERVICE

Office of Clerk and Recorder, County of Lincoln. This "corner record" was filed for record on May 4, 1999 and was noted on the cross-index plat and is assigned page No. —, in book No. 10338

Coral M. Cummins By PEB  
County Official



● - corner this sheet