

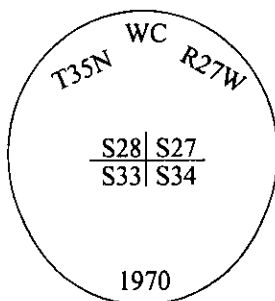
CERTIFIED CORNER RECORDATION

Corner W.C. Secs. 27,28,33 & 34 T. 35N R. 27W P.M., MT Lincoln County

-AMENDED-

- I. 1913 G.L.O. Original Record by Lowellyn D. Lyman et.al.: Set a slate stone, 15x7x5 ins., 10 ins. in the ground, for W.C., for Cor. of secs. 27,28,33 and 34, mkd. "W.C." on the N.E. face, with 1 notch on S. and 3 notches on E. edges. Established four bearing trees.

1970 B.L.M. Remonumentation Record by Joseph E. French: The witness corner of secs. 27,28,33 and 34, monumented with a slate stone, 15x7x5 ins., firmly set in the ground, mkd. with "WC" on the N.E. and 3 notches on the E., and 1 notch on the S. edges and witnessed by two original bearing trees. At the corner point, set an iron post, 30 ins. long, 2 1/2 ins. diam., 24 ins. in the ground, with brass cap, mkd. as shown:



Established two new bearing trees and buried the original stone alongside and set a wooden post, 4.0 ft. long, 4.0 ins. in diam., in the ground alongside the iron post.

- II. Found a 2 1/2 in. diam. iron pipe, protruding 4.0 ins. above the ground, firmly set, with B.L.M. brass cap mkd. as shown above.

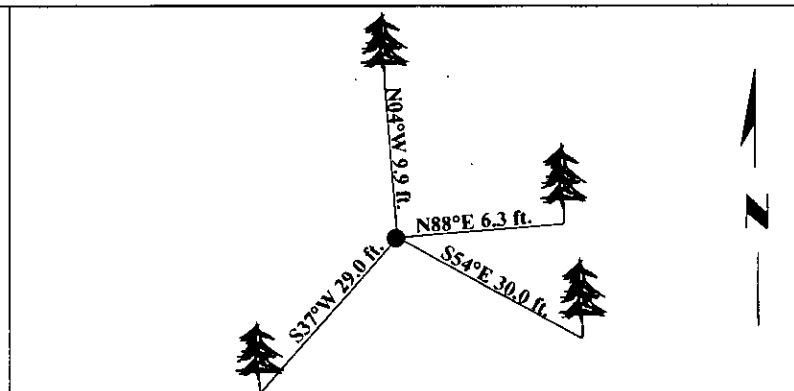
from which:

- A spruce, 9 ins. diam., bears N88°E, 6.3 ft. dist., with a healed face. (BLM-record)
- A larch, 35 ins. diam., bears S54°E, 30.0 ft. dist., with a healed face. (GLO-record)
- A larch, 33 ins. diam., bears S31°W, 29.0 ft. dist., with a healed face. (GLO-record)
- A spruce, 11 ins. diam., bears N04°W, 9.9 ft. dist., with a healed face. (BLM-record)

- III. Painted bearing trees and attached Land Survey Monument and Bearing Tree signs.

*Amended, Due to typographical errors on the previously filed Certified Corner Recordation, filed in the Lincoln County Courthouse, on the 4th of February, 1995, assigned page No. 7110.

Magnetic Declination: 20° East.



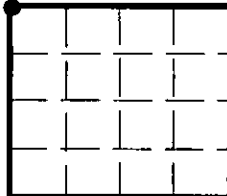
SKETCH OF CORNER

CERTIFICATION	
I. <u>Thomas M. Hommel</u>	certify the information shown herein is true and correct.
I. <u>Steven A. Boyer</u>	certify that this Corner Record correctly represents work performed by me or under my direction in compliance with the Corner Recordation Act (20-22-101) et seq., M.C.A.)
	Signature of Surveyor & Seal
Date: <u>02/24/99</u>	
Reg. No.: <u>9750LS</u>	
Employer: <u>U.S. FOREST SERVICE</u>	

Office of Clerk and Recorder, County of Lincoln. This "corner record" was filed for record on Feb 25, 1999 was noted on the cross-index plat and is assigned page No. 10293 in book No. Correct # 7110 - Filed 4-27-95 RECORDED IN S 33 T 33 - R - 26

Coral M. Cummings By PLB
County Official

Cross Index No. V-13 T. 35N R. 27W P.M., MT



● - corner this sheet