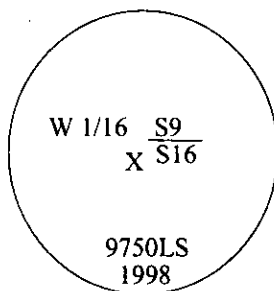


-CERTIFIED CORNER RECORDATION

Corner W 1/16 Secs. 9 & 16 T. 35N R. 27W P.M., MT Lincoln County

- I. No previous history.
- II. No evidence found.
- III. Set by survey, a 3/4 in. diam. aluminum rod, 30 ins. long, 26 ins. in the ground, with a 3 1/4 in. diam. aluminum cap, mkd. as shown, with an "x" for the exact cor. point, a small collar of stone surrounds the monument.



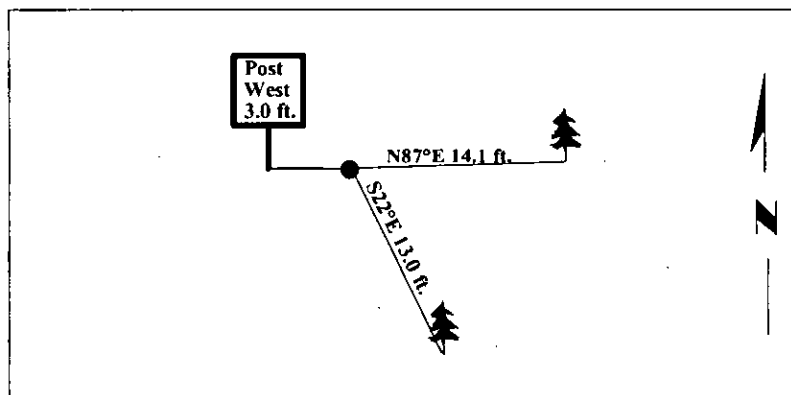
Established two bearing trees:

- A fir, 14 ins. diam., bears N87°E, 14.1 ft. dist., mkd. "W 1/16 S9 BT".
- A fir, 12 ins. diam., bears S22°E, 13.0 ft. dist., mkd. "W 1/16 S16 BT".

Set a 6 ft. galvanized steel guard post, bears West, 3.0 ft. dist., with Land Survey Monument and Property Boundary decals attached.

Painted bearing trees and attached Land Survey Monument and Bearing Tree signs.

Magnetic Declination: 20° East



SKETCH OF CORNER

CERTIFICATION	
I. <u>Rex O. Rice</u>	certify the information shown herein is true and correct.
<u>Rex O. Rice</u>	
I. <u>Steven A. Boyer</u>	certify that this Corner Record correctly represents work performed by me or under my direction in compliance with the "Corner Recordation Act" (70-22-101, et seq., M.C.A.)
<u>Steven A. Boyer</u>	
Signature of Surveyor & Seal	
Date: <u>11/09/98</u>	
Reg. No.: <u>9750LS</u>	
Employer: <u>U.S. FOREST SERVICE</u>	

Office of Clerk and Recorder, County of Lincoln. This "corner record" was filed for record on 1-20-99 and was noted on the cross-index plat and is assigned page No. 10292 in book No. _____.

Coral M. Cummings By RLB
County Official

Sec. 9

● - corner this sheet