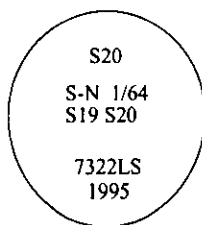


CERTIFIED CORNER RECORDATION

Corner S-N 1/64 Sec. 20 T. 35N R. 27W P.M., MT Lincoln County

- I. No previous history.
- II. Nothing found.
- III. At the position determined by survey, set a 3/4 in. diam., 30 ins. long alum. rod, 29 ins. in the ground, with a 3 1/4 in. diam. alum. cap mkd. as shown:



Established two new bearing trees:

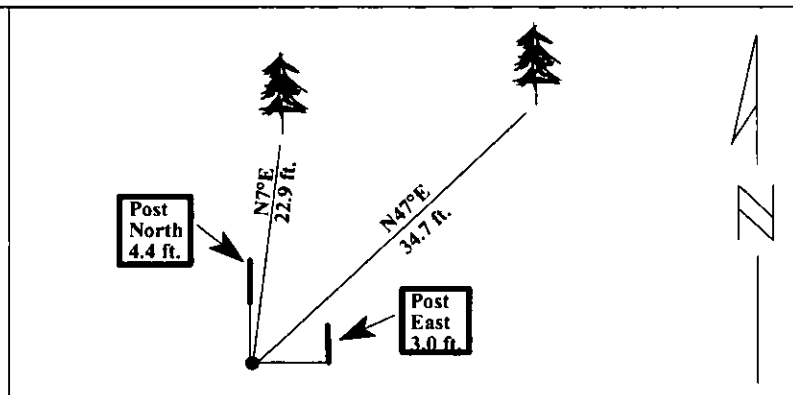
A fir, 7 ins. diam., bears N7°E, 22.9 ft. dist., mkd. "S-N 1/64 S20 BT".

A aspen, 10 ins. diam., bears N47°E, 34.7 ft. dist., mkd. "S-N 1/64 S20 BT".

Set two 6 ft. steel guard posts with LSM and PB decals: North, 4.4 feet dist., and East, 3.0 feet dist. from monument.

Painted red bands around the bearing trees and attached Land Survey Monument and Bearing Tree signs.

Magnetic Declination: 20° East



SKETCH OF CORNER

CERTIFICATION	
I. <u>Rex O. Rice</u>	certify the information shown herein is true and correct.
<u>Rex O. Rice</u>	Signature Ground Party Chief
I. <u>Alvah F. Hughes</u>	certify that this Corner Record correctly represents work performed by me or under my direction in compliance with the "Corner Recordation Act" (70-22-101, et seq., M.C.A.)
<u>Alvah F. Hughes</u>	Signature of Surveyor & Seal
Date: <u>3/28/96</u>	
Reg. No.: <u>7322LS</u>	
Employer: <u>U.S. FOREST SERVICE</u>	

Office of Clerk and Recorder, County of Lincoln. This "corner record" was filed for record on 11-18-98 was noted on the cross-index plat and is assigned page No. 10261 in book No. Coral M. Cumming By PLS County Official

Sec. 20

● - corner this sheet