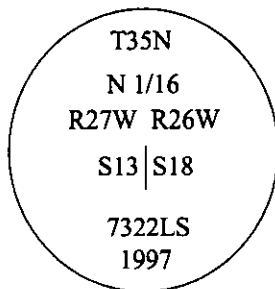


CERTIFIED CORNER RECORDATION

Corner N 1/16 Sec. 13&18 T. 35N R. 27W P.M., MT Lincoln County

- I. No previous history.
- II. No evidence found.
- III. Set by survey, a 3/4 in. diam. x 30 ins. long aluminum rod, 26 ins. in the ground, with a 3 1/4 in. diam. aluminum cap, mkd. as shown.

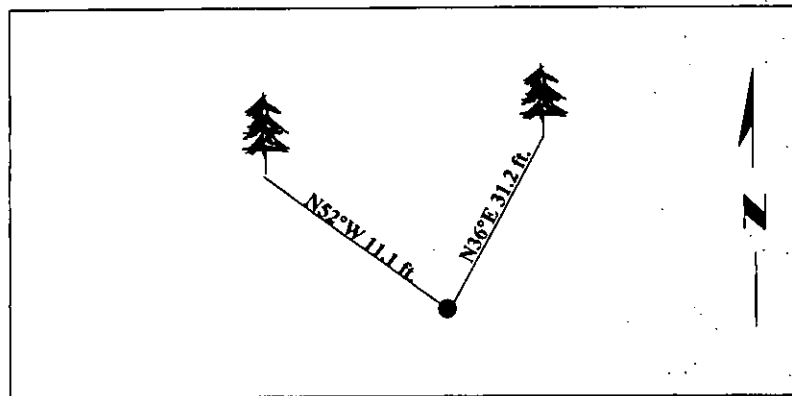


Established two bearing trees:

- A fir, 18 ins. diam., bears N36°E, 31.2 ft. dist., mkd. "N 1/16 S18 BT."
- A fir, 9 ins. diam., bears N52°W, 11.1 ft. dist., mkd. "N 1/16 S13 BT".

Painted bearing trees and attached Land Survey Monument and Bearing Tree signs.

Magnetic Declination: 20° East.

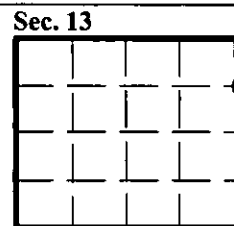


SKETCH OF CORNER

CERTIFICATION	
I, <u>Mark Federman</u>	certify the information shown herein is true and correct.
I, <u>Alvah F. Hughes</u>	
certify that this Corner Record correctly represents work performed by me or under my direction in compliance with the "Corner Recordation Act", (70-22-101, of sec. M.C.A.)	
<u>Alvah F. Hughes</u>	
Signature of Surveyor & Seal	
Date: <u>07/24/97</u>	
Reg. No.: <u>7322LS</u>	
Employer: <u>U.S. FOREST SERVICE</u>	

Office of Clerk and Recorder, County of Lincoln This "corner record" was filed for record on 12-26-97 was noted on the cross-index plat and is assigned page No. 10056 in book No. _____

Coral M. Cummingby SLS
County Official



● - corner this sheet

Cross Index No. K-25 T. 35N R. 27W P.M., MT