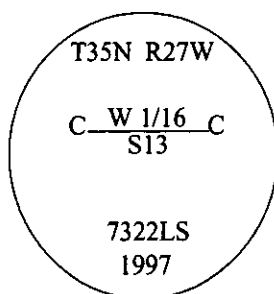


# CERTIFIED CORNER RECORDATION

Corner CW 1/16 Sec. 13 T. 35N R. 27W P.M., MT Lincoln County

- I. No previous history.
- II. No evidence found.
- III. Set by survey, a 3/4 in. diam. x 30 ins. long aluminum rod, 28 ins. in the ground, with a 3 1/4 in. diam. aluminum cap, mkd. as shown.

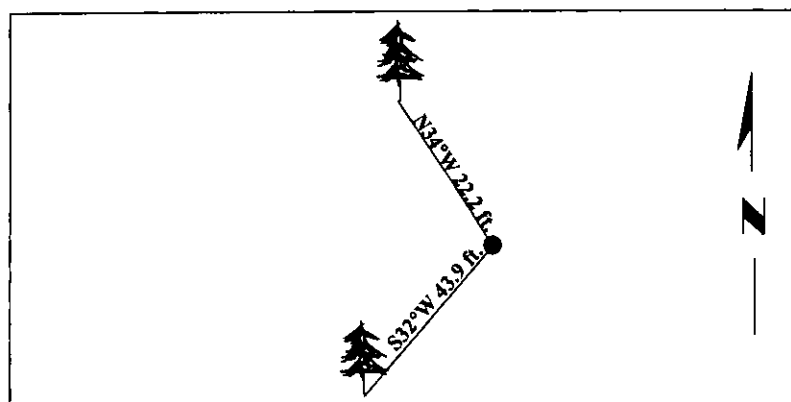


Established two bearing trees:

- A fir, 12 ins. diam., bears S32°W, 43.9 ft. dist., mkd. "CW 1/16 S13 BT."
- A fir, 11 ins. diam., bears N34°W, 22.2 ft. dist., mkd. "CW 1/16 S13 BT".

Painted bearing trees and attached Land Survey Monument and Bearing Tree signs.

Magnetic Declination: 20° East.



SKETCH OF CORNER

CERTIFICATION	
I. <b>Mark Federman</b>	certify the information shown herein is true and correct.
<i>Mark Federman</i>	
I. <b>Alvah F. Hughes</b>	certify that this Corner Record correctly represents work performed by me or under my direction in compliance with the "Corner Recordation Act" (70-22-101; et seq., M.C.A.)
<i>Alvah F. Hughes</i>	
Date: <b>07/24/97</b>	Signature of Surveyor Seal <b>HUGHES</b>
Reg. No.: <b>7322LS</b>	<b>7322LS</b>
Employer: <b>U.S. FOREST SERVICE</b>	<b>REGISTERED</b>

Office of Clerk and Recorder, County of Lincoln. This "corner record" was filed for record on 12-26-97 was noted on the cross-index plat and is assigned page No. 10045 in book No. \_\_\_\_\_

*Coral M. Cumming*  
County Official

